

DIMENSIONS FOR OVERALL HEIGHT AND LENGTH ARE APPROXIMATE
 OVERALL HEIGHT = 112"
 OVERALL WIDTH WITH RUB
 RAILS & FENDERETTES = 98"

WHELEN PIONEER PCPSM2C 12-VOLT
 SURFACE MOUNT COMBINATION SPOT/FLOODLIGHT
 WITH CHROME FLANGE

(6) WHELEN 900 SUPER LED LIGHTS:
 R/W/R/SPOT-FLOOD/R/W/R
 WITH CLEAR LENSES

(5) TECNIQ S330 AMBER
 MINI-LED MARKER LIGHTS

AC CONDENSER

6-OUTLET 125-VOLT
 POWER STRIP BEHIND
 PASSENGER SEAT

TOMAR 3x7
 PRE-EMPTION
 EMITTER

AIR HORN
 LANYARD

OEM POWER
 ADJUSTABLE
 MIRRORS

FLASHING HEADLIGHTS W/
 DAYTIME RUNNING LIGHTS

OEM FOG LIGHTS

(2) WHELEN ION SERIES
 RED/WHITE SUPER LED GRILLE
 LIGHTS WITH CLEAR LENSES
 BRACKET MOUNTED TO PUSH BAR

HIDDEN UNLOCK SWITCH
 IN GRILLE AREA

(2) WHELEN SA314A
 100-WATT SIREN
 SPEAKERS CONNECTED
 TO FEDERAL EQ2B SIREN
 AND MOUNTED TO GRILLE
 GUARD.

BUELL AIR HORNS

SETINA MANUFACTURING
 PB-400 PUSH BUMPER
 WITH BLACK FINISH

THIS DRAWING IS FOR REPRESENTATIONAL PURPOSES ONLY. DETAILS ARE CONCEPTUAL AND ARE SUBJECT TO CHANGE DURING DESIGN AND CONSTRUCTION
 DIMENSIONS ARE APPROXIMATE UNLESS NOTED OTHERWISE TO MEET A SPECIFIC CUSTOMER NEED.

APPROVAL SIGNATURE:

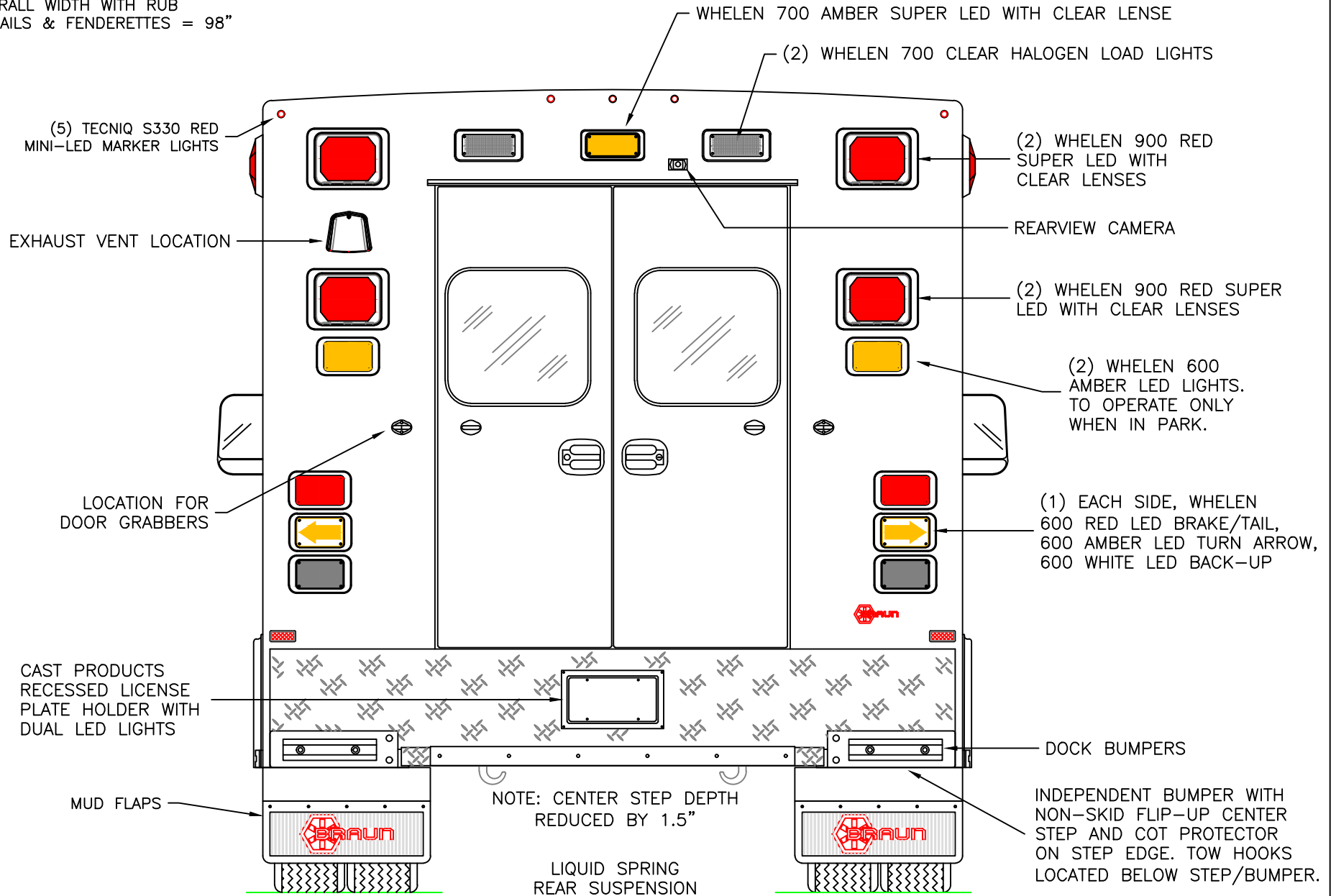


FRONT EXTERIOR VIEW - CHIEF XL-1
 FORD F-550 4x4 CHASSIS

DATE: 10-14-24
 DWG. TKD
 REV. E

DRAWING NO.

DIMENSIONS FOR OVERALL HEIGHT AND LENGTH ARE APPROXIMATE
 OVERALL HEIGHT = 112"
 OVERALL WIDTH WITH RUB
 RAILS & FENDERETTES = 98"



THIS DRAWING IS FOR REPRESENTATIONAL PURPOSES ONLY. DETAILS ARE CONCEPTUAL AND ARE SUBJECT TO CHANGE DURING DESIGN AND CONSTRUCTION
 DIMENSIONS ARE APPROXIMATE UNLESS NOTED OTHERWISE TO MEET A SPECIFIC CUSTOMER NEED.



REAR EXTERIOR VIEW - CHIEF XL-I
 FORD F-550 4x4 CHASSIS

| | |
|-------|----------|
| DATE: | 06-07-22 |
| DWG.: | SER |
| REV.: | C |

DRAWING NO.

1:16

DIMENSIONS FOR OVERALL HEIGHT AND LENGTH ARE APPROXIMATE
 OVERALL HEIGHT = 112"
 ESTIMATED OVERALL LENGTH WITH GRILLE GUARD = 312"
 MODULE LENGTH = 169"

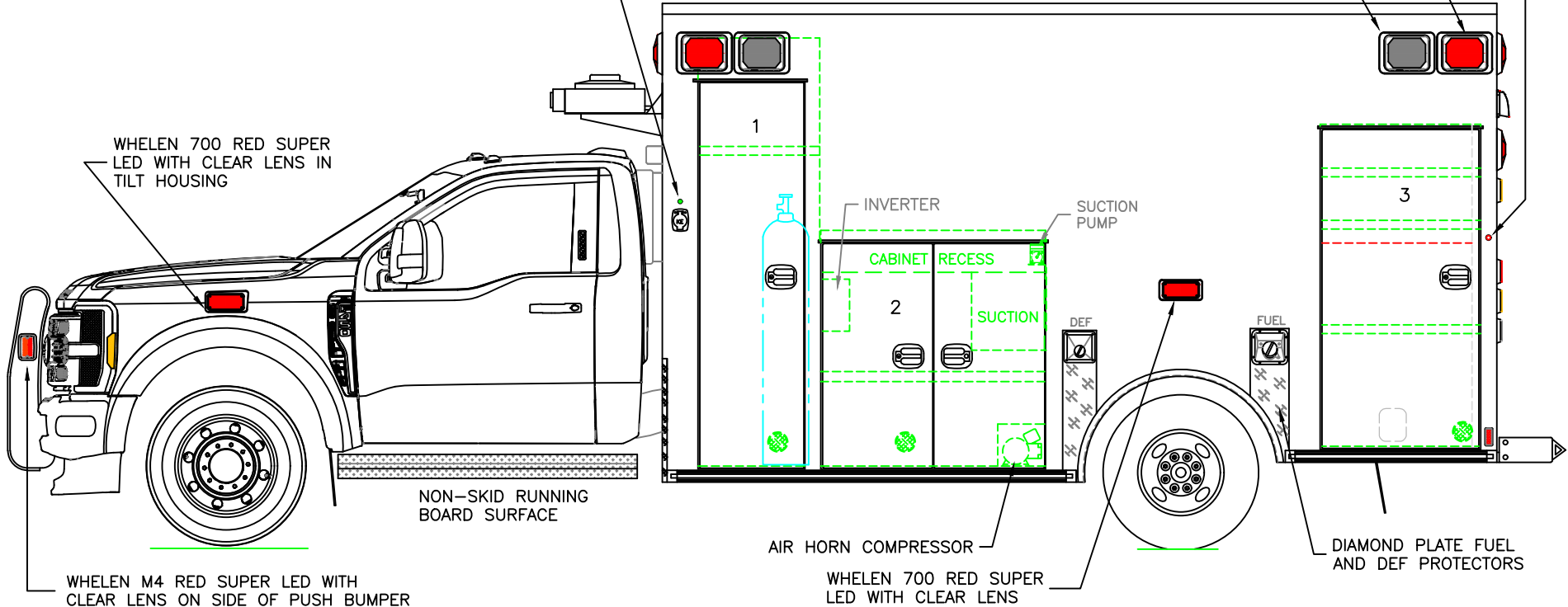
TECNIQ S330 RED MINI-LED MARKER LIGHT TO ALSO FLASH WITH TURN SIGNAL

(2) WHELEN 900 RED SUPER LED WARNING LIGHTS WITH CLEAR LENSES

KUSSMAUL 20 AMP SUPER AUTO-EJECT SHORELINE WITH WHITE COVER AND GREEN INDICATOR LIGHT

(2) WHELEN 900 24-DIODE LED SCENE LIGHTS

WHELEN 700 RED SUPER LED WITH CLEAR LENS IN TILT HOUSING



COMPARTMENT

O.S.S #1

CLEAR OPENING: 77.00h x 18.25w
 INSIDE DIM'S.: 86.75h x 24.50w x 20.75d
 MAIN OXYGEN ON RIGHT SIDE OF COMPARTMENT
 (1) FIXED SHELF ABOVE OXYGEN
 NOTE: SHELF TO BE MOUNTED AS LOW AS POSSIBLE, BUT BE ABOVE OXYGEN ACCESS.

O.S.S #2

CLEAR OPENING: 44.25h x 39.50w
 INSIDE DIM'S.: 47.75h x 45.50w x 20.75d
 (1) ADJUSTABLE SHELF

O.S.S #3

CLEAR OPENING: 63.50h x 28.75w
 INSIDE DIM'S.: 65.25h x 32.50w x 20.75d
 OUTSIDE ACCESS ONLY
 UPPER HALF SHALLOW DEPTH FOR INTERIOR CABINET
 (2) SHALLOW DEPTH ADJUSTABLE SHELVES
 (1) FULL DEPTH ADJUSTABLE SHELF
 BOTTOM HALF IS FULL DEPTH

NOTE: INTERIOR OSS DOORS TO HAVE SMOOTH ALUMINUM ON LOWER HALF

● = TRUCKLIGHT SUPER 44 AMBER LED ON INSIDE OF FORWARD-HINGED DOORS

THIS DRAWING IS FOR REPRESENTATIONAL PURPOSES ONLY. DETAILS ARE CONCEPTUAL AND ARE SUBJECT TO CHANGE DURING DESIGN AND CONSTRUCTION
 DIMENSIONS ARE APPROXIMATE UNLESS NOTED OTHERWISE TO MEET A SPECIFIC CUSTOMER NEED.



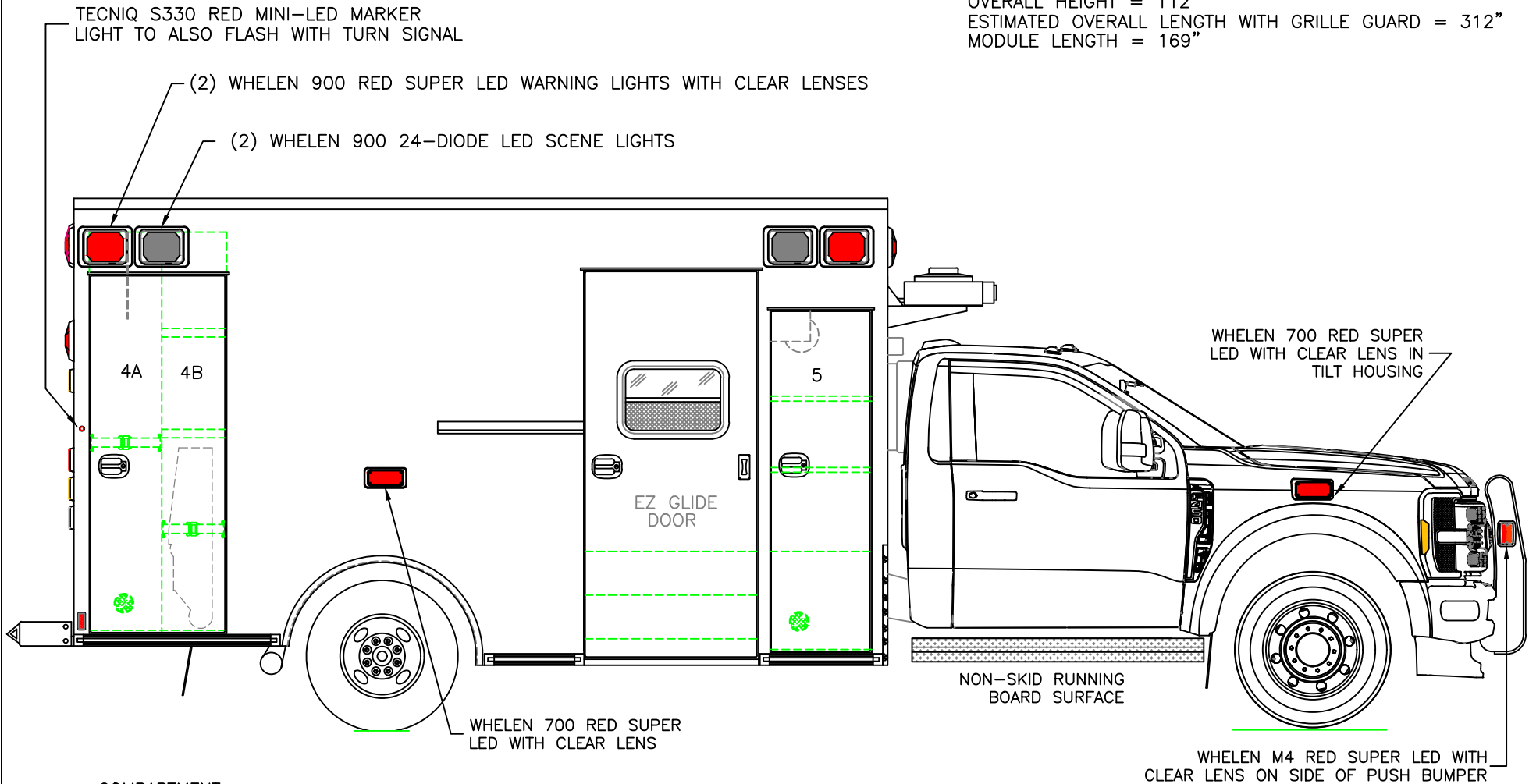
STREETSIDE EXTERIOR VIEW - CHIEF XL-I
 FORD F-550 4x4 CHASSIS

1:30

DATE: 10-14-24
 DWG. TKD
 REV. F

DRAWING NO.

DIMENSIONS FOR OVERALL HEIGHT AND LENGTH ARE APPROXIMATE
 OVERALL HEIGHT = 112"
 ESTIMATED OVERALL LENGTH WITH GRILLE GUARD = 312"
 MODULE LENGTH = 169"



COMPARTMENT
 O.S.S #4

CLEAR OPENING: 73.00h x 24.75w
 INSIDE DIM'S. 4A: 82.75h x 15.00w x 20.75d
 BACKBOARD/SCOOP STORAGE WITH 18" TALL ADJUSTABLE
 DIVIDER, CENTERED ON CEILING, ON UNI-STRUT TRACK
 SEATBELT STRAP INSTALLED TO SECURE BOARDS

INSIDE DIM'S. 4B: 82.75h x 13.50w x 20.75d
 (2) ADJUSTABLE SHELVES
 STAIR CHAIR STORAGE WITH SEATBELT STRAP

O.S.S #5

CLEAR OPENING: 69.50h x 17.50w
 INSIDE DIM'S: SEE PARTITION INTERIOR VIEW
 INSIDE/OUTSIDE ACCESS WITH (2) ADJUSTABLE SHELVES

NOTE: INTERIOR OSS DOORS TO HAVE SMOOTH ALUMINUM ON LOWER HALF

● = TRUKLIGHT SUPER 44 AMBER LED ON INSIDE OF #4 & #5 DOORS

THIS DRAWING IS FOR REPRESENTATIONAL PURPOSES ONLY. DETAILS ARE CONCEPTUAL AND ARE SUBJECT TO CHANGE DURING DESIGN AND CONSTRUCTION
 DIMENSIONS ARE APPROXIMATE UNLESS NOTED OTHERWISE TO MEET A SPECIFIC CUSTOMER NEED.



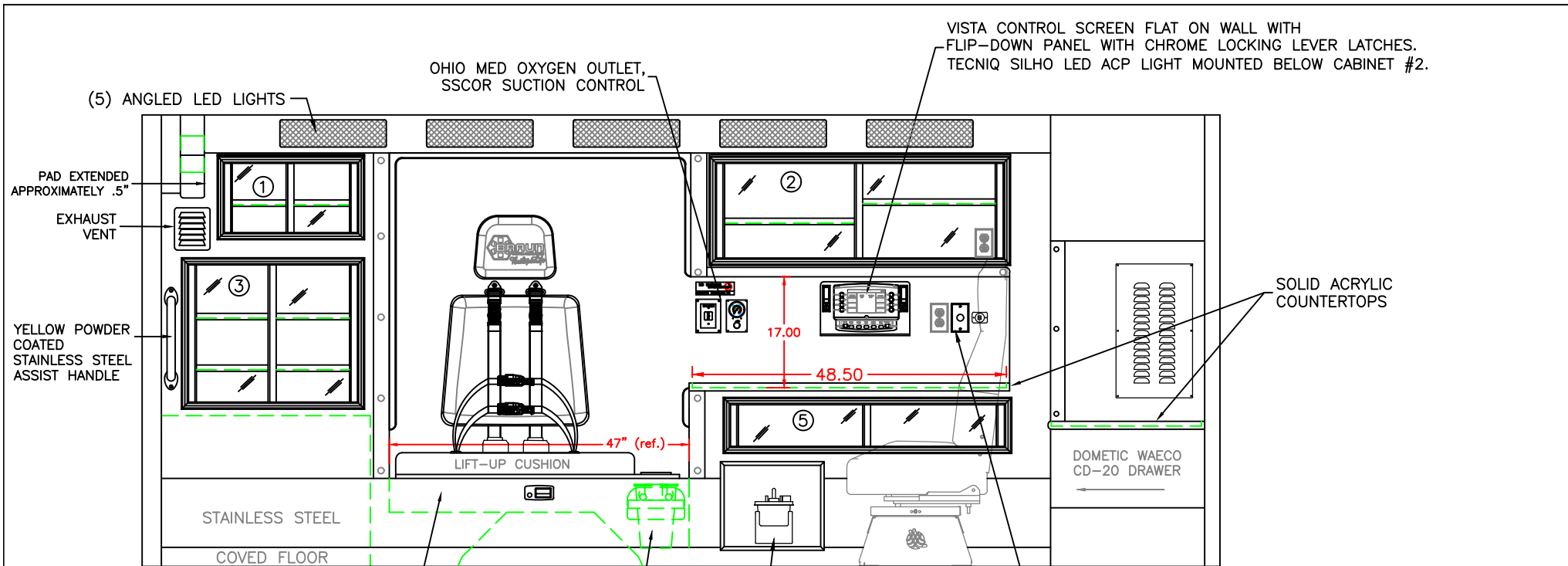
CURBSIDE EXTERIOR VIEW - CHIEF XL-I
 FORD F-550 4x4 CHASSIS

1:30

| | | |
|-------|----------|-------|
| DATE: | 10-14-24 | |
| DWG.: | TKD | REV.: |
| | F | |

DRAWING NO.





(5) ANGLED LED LIGHTS

OHIO MED OXYGEN OUTLET,
SSCOR SUCTION CONTROL

VISTA CONTROL SCREEN FLAT ON WALL WITH
FLIP-DOWN PANEL WITH CHROME LOCKING LEVER LATCHES.
TECNIQ SILHO LED ACP LIGHT MOUNTED BELOW CABINET #2.

PAD EXTENDED
APPROXIMATELY .5"
EXHAUST
VENT

YELLOW POWDER
COATED
STAINLESS STEEL
ASSIST HANDLE

SOLID ACRYLIC
COUNTERTOPS

DOMETIC WAECO
CD-20 DRAWER

EVS CONTOUR V4 SEATING POSITION.
SEAT CUSHION TO BE SAME HEIGHT AS
CURBSIDE BENCH SEAT WITH STORAGE BELOW

RECESSED 3.3-QT SHARPS
AND 8-QUART WASTE WITH
HINGED ACRYLIC LID

125VAC OUTLET/12VDC OUTLET/DUAL USB PORT

RECESSED SSCOR SUCTION CANISTER
(RECESS REDUCED IN SIZE)

EVS V4 HARNESS SEAT WITH INTEGRAL CHILD
SAFETY SEAT, MOUNTED ON SWIVEL BASE.
NOTE: SEAT TO BE AS CLOSE TO ACTION COUNTER
AS POSSIBLE, WHILE ALLOWING SEAT TO SWIVEL
360-DEGREES WITH SEAT SLIDES IN ANY POSITION.

COMPARTMENT

#1 DOOR OPENING: 10.75h x 20.75w
INSIDE DIMS: 13.25h x 22.75w x 17.25d
(1) ADJUSTABLE SHELF
SLIDING POLYCARBONATE DOORS
TOTAL CABINET WEIGHT RATING = 25 lbs.

#3 DOOR OPENING: 21.50h x 26.50w
INSIDE DIMS: 23.25h x 28.25w x 7.75d
(2) ADJUSTABLE SHELVES
SLIDING POLYCARBONATE DOORS
TOTAL CABINET WEIGHT RATING = 25 lbs.

CABINETS #1 & #2 HAVE RESTOCKING FRAMES

#2 DOOR OPENING: 14.75h x 45.00w
INSIDE DIMS: 17.25h x 47.00w x 17.25d
(1) ADJUSTABLE SHELF ON EACH SIDE OF CENTER DIVIDER
SLIDING POLYCARBONATE DOORS
125VAC OUTLET IN FORWARD LOWER CORNER
TOTAL CABINET WEIGHT RATING = 25 lbs.

#4 CABINET REMOVED FROM LAYOUT
#5 DOOR OPENING: 6.50h x 42.75h
INSIDE DIMS: 8.25h x 44.50w x 8.00d
SLIDING POLYCARBONATE DOORS
TOTAL CABINET WEIGHT RATING = 15 lbs.

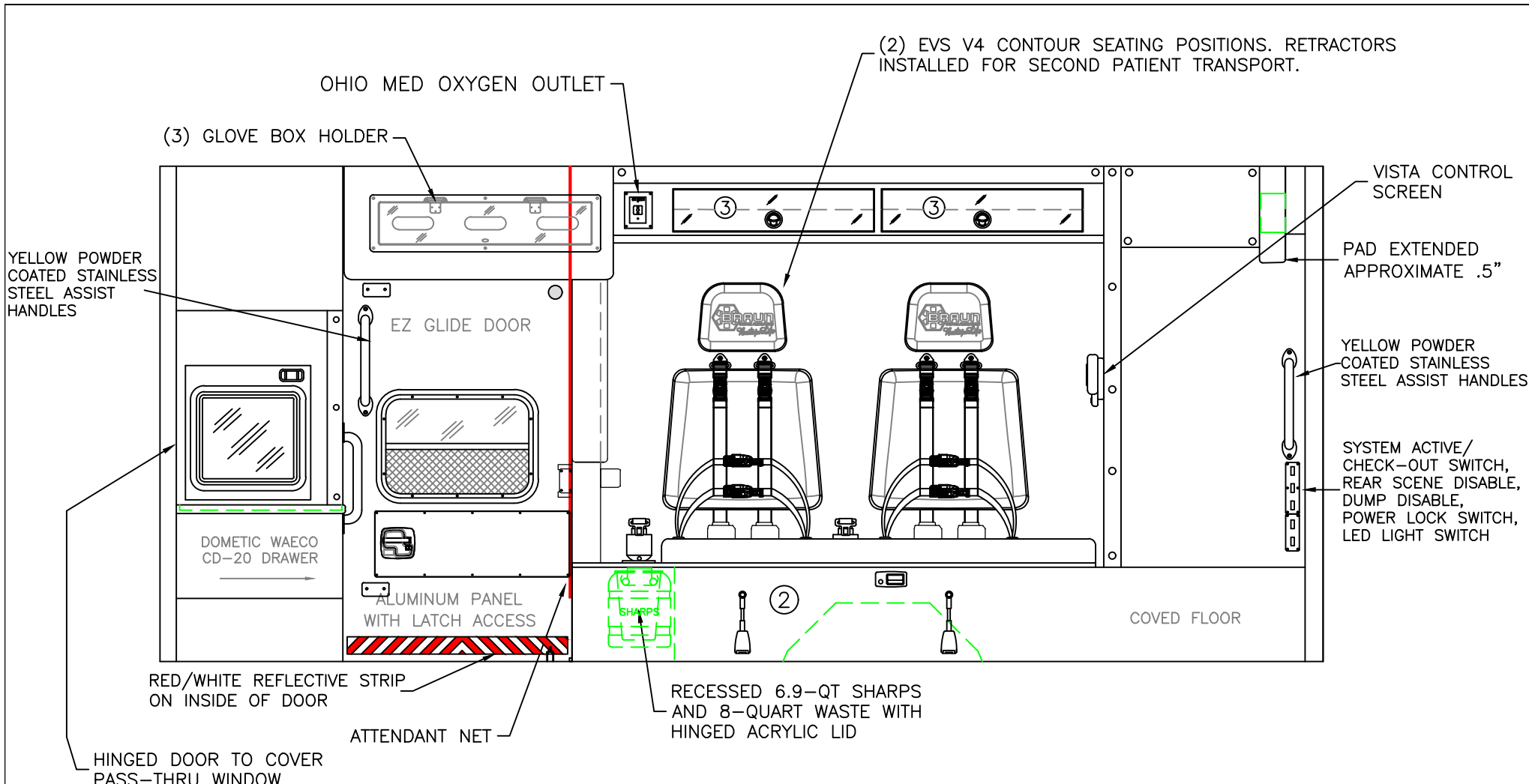
CABINETS TO BE ALUMINUM

THIS DRAWING IS FOR REPRESENTATIONAL PURPOSES ONLY. DETAILS ARE CONCEPTUAL AND ARE SUBJECT TO CHANGE DURING DESIGN AND CONSTRUCTION
DIMENSIONS ARE APPROXIMATE UNLESS NOTED OTHERWISE TO MEET A SPECIFIC CUSTOMER NEED.



STREETSIDE INTERIOR VIEW
CHIEF XL-1

| | | | |
|-------|---------|-------------|---|
| DATE: | 9-17-24 | DRAWING NO. | |
| DWG. | SER | REV. | C |
| 1:22 | | | |



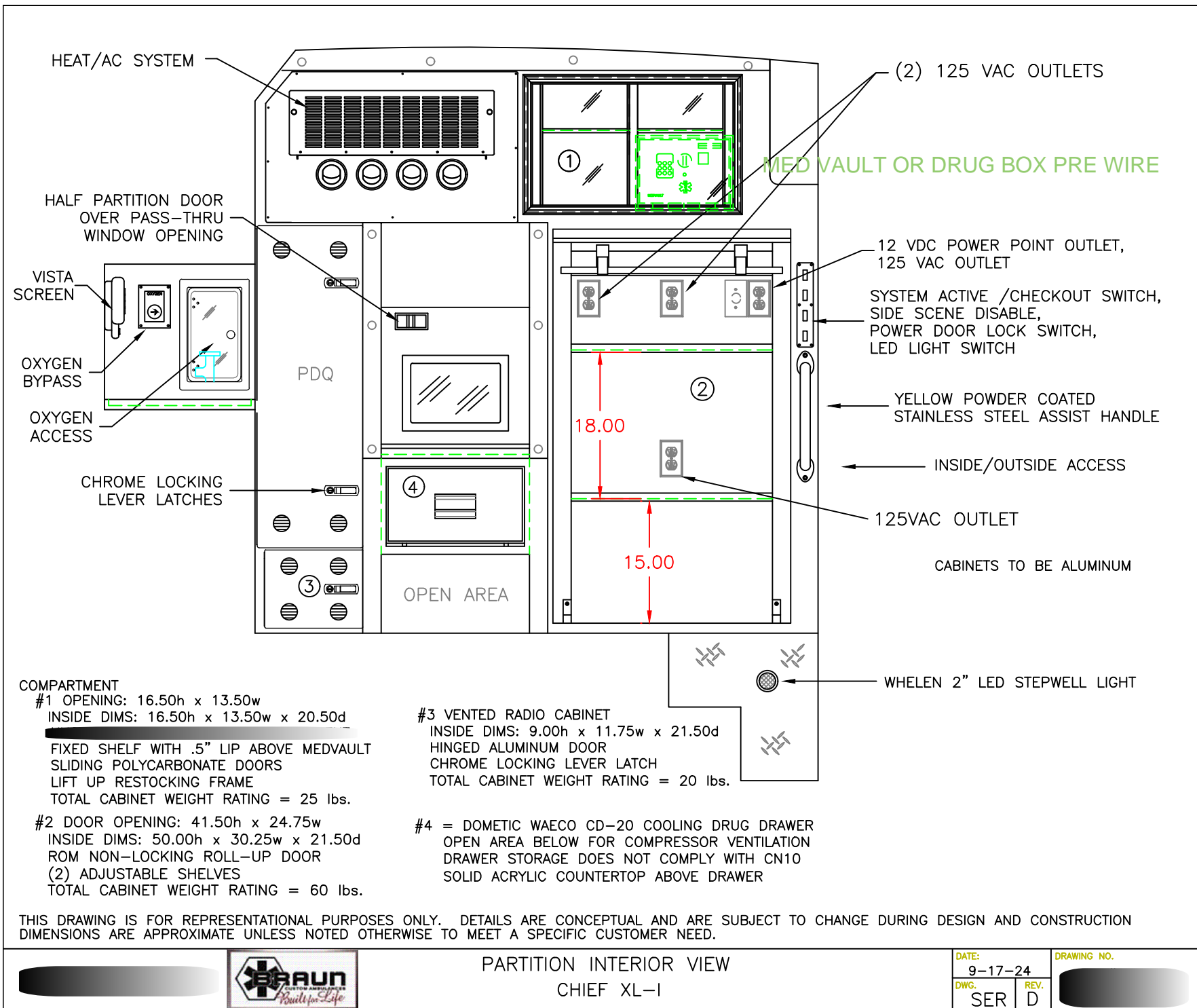
CABINETS TO BE ALUMINUM

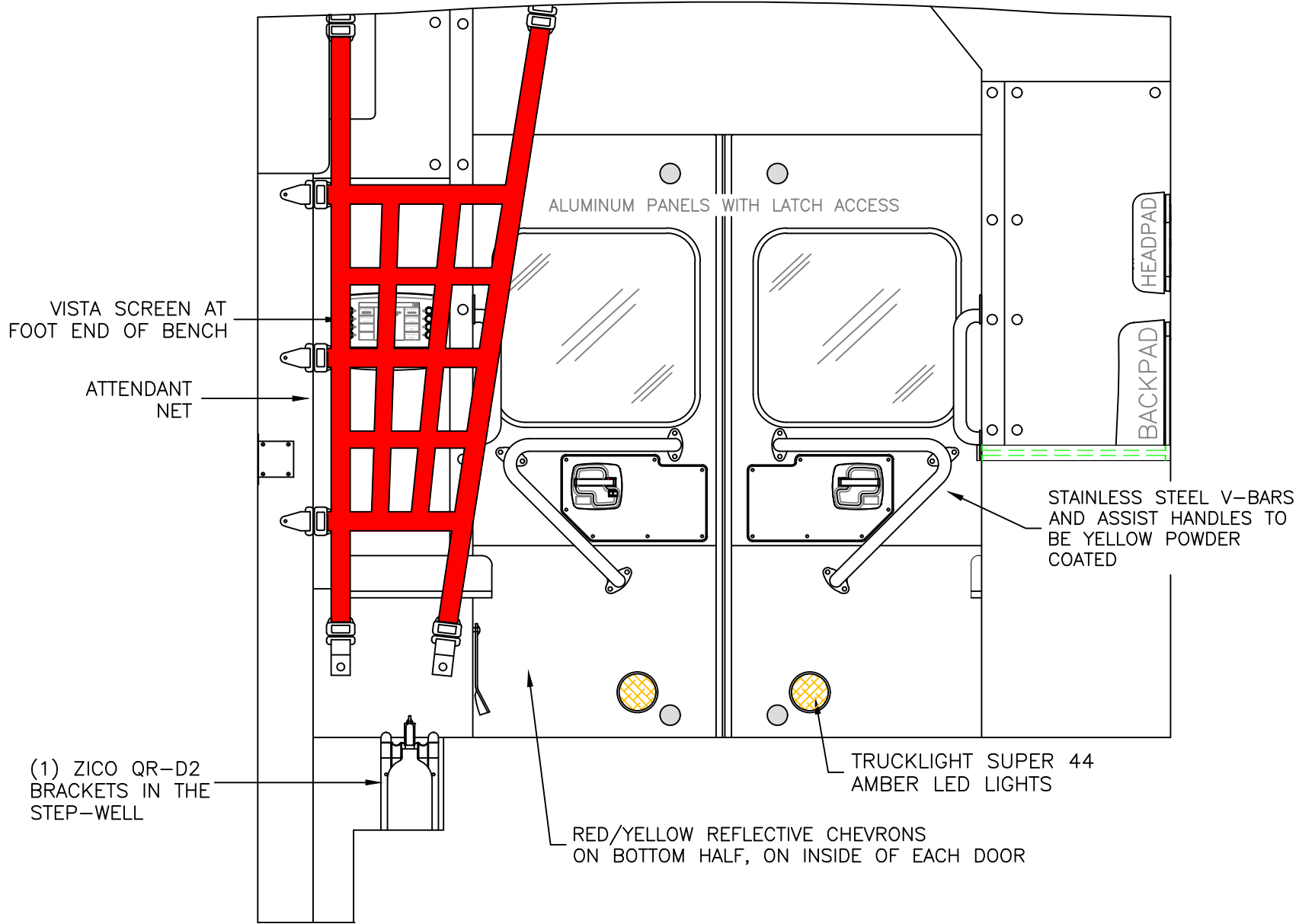
THIS DRAWING IS FOR REPRESENTATIONAL PURPOSES ONLY. DETAILS ARE CONCEPTUAL AND ARE SUBJECT TO CHANGE DURING DESIGN AND CONSTRUCTION
 DIMENSIONS ARE APPROXIMATE UNLESS NOTED OTHERWISE TO MEET A SPECIFIC CUSTOMER NEED.



CURBSIDE INTERIOR VIEW
 CHIEF XL-I

| | |
|-------------------|-------------|
| DATE: 02-17-22 | DRAWING NO. |
| DWG. REV. SER A | |
| 1:20 | |





THIS DRAWING IS FOR REPRESENTATIONAL PURPOSES ONLY. DETAILS ARE CONCEPTUAL AND ARE SUBJECT TO CHANGE DURING DESIGN AND CONSTRUCTION
 DIMENSIONS ARE APPROXIMATE UNLESS NOTED OTHERWISE TO MEET A SPECIFIC CUSTOMER NEED.



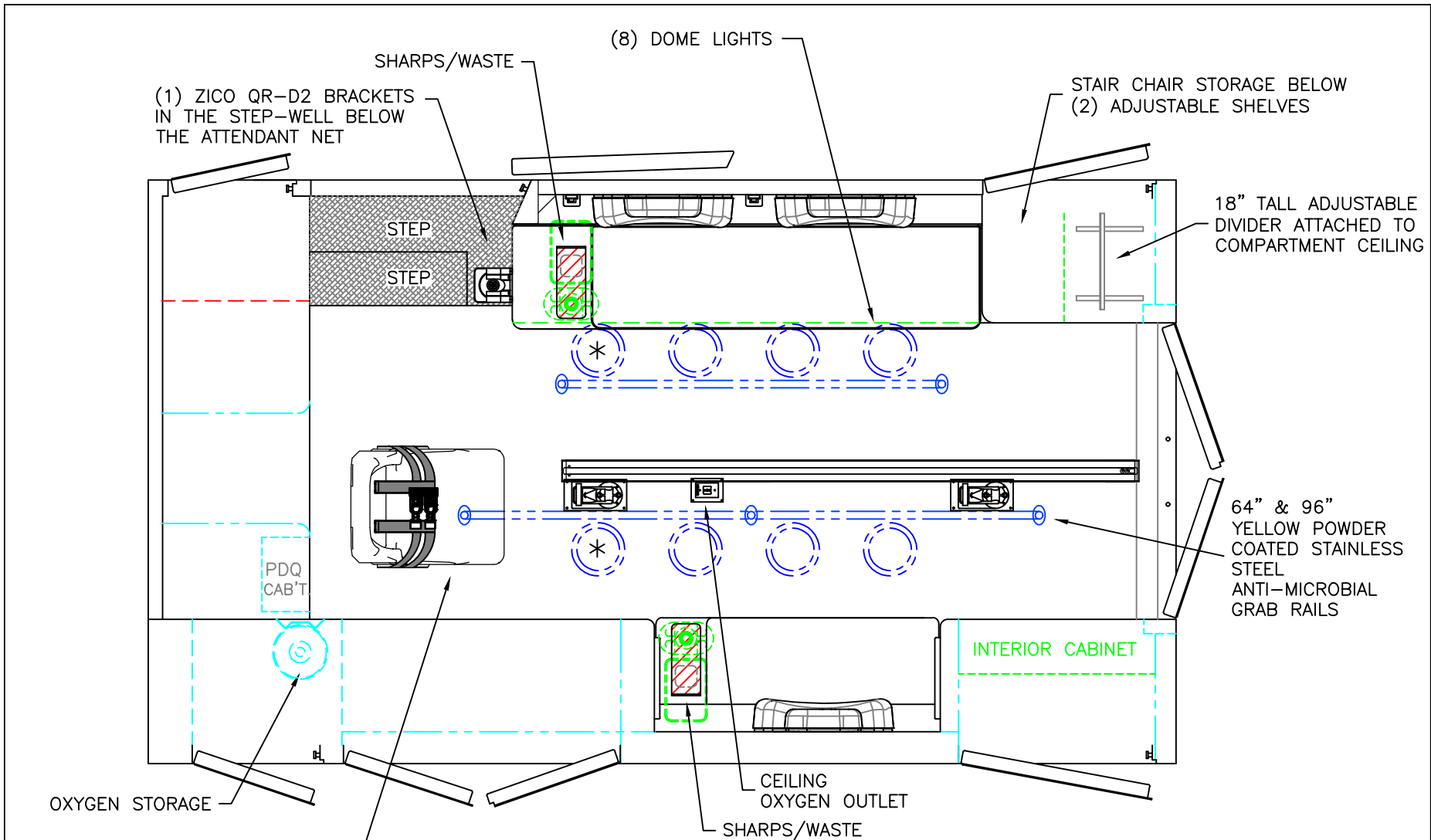
REAR INTERIOR VIEW
 CHIEF XL-1

1:12

| | |
|-------|---------|
| DATE: | 8-14-24 |
| DWG.: | BT |
| REV.: | C |

DRAWING NO.





EVS V4 HARNESS SEAT WITH INTEGRAL CHILD SAFETY SEAT, MOUNTED ON SWIVEL BASE.
 NOTE: SEAT TO BE AS CLOSE TO ACTION COUNTER AS POSSIBLE, WHILE ALLOWING SEAT TO SWIVEL 360-DEGREES WITH SEAT SLIDES IN ANY POSITION.

 = (2) RECESSED CEILING IV HANGER LOCATIONS

* = (2) ANTENNA BASES LOCATED OUTBOARD OF DOME LIGHTS WITH COAX SERVICE LOOP

STRYKER FLOOR PLATE AND PRE-WIRE FOR CENTER MOUNT

MODULE WIDTH = 96"
 MODULE LENGTH = 169"
 MODULE HEAD ROOM = 72"

THIS DRAWING IS FOR REPRESENTATIONAL PURPOSES ONLY. DETAILS ARE CONCEPTUAL AND ARE SUBJECT TO CHANGE DURING DESIGN AND CONSTRUCTION DIMENSIONS ARE APPROXIMATE UNLESS NOTED OTHERWISE TO MEET A SPECIFIC CUSTOMER NEED.