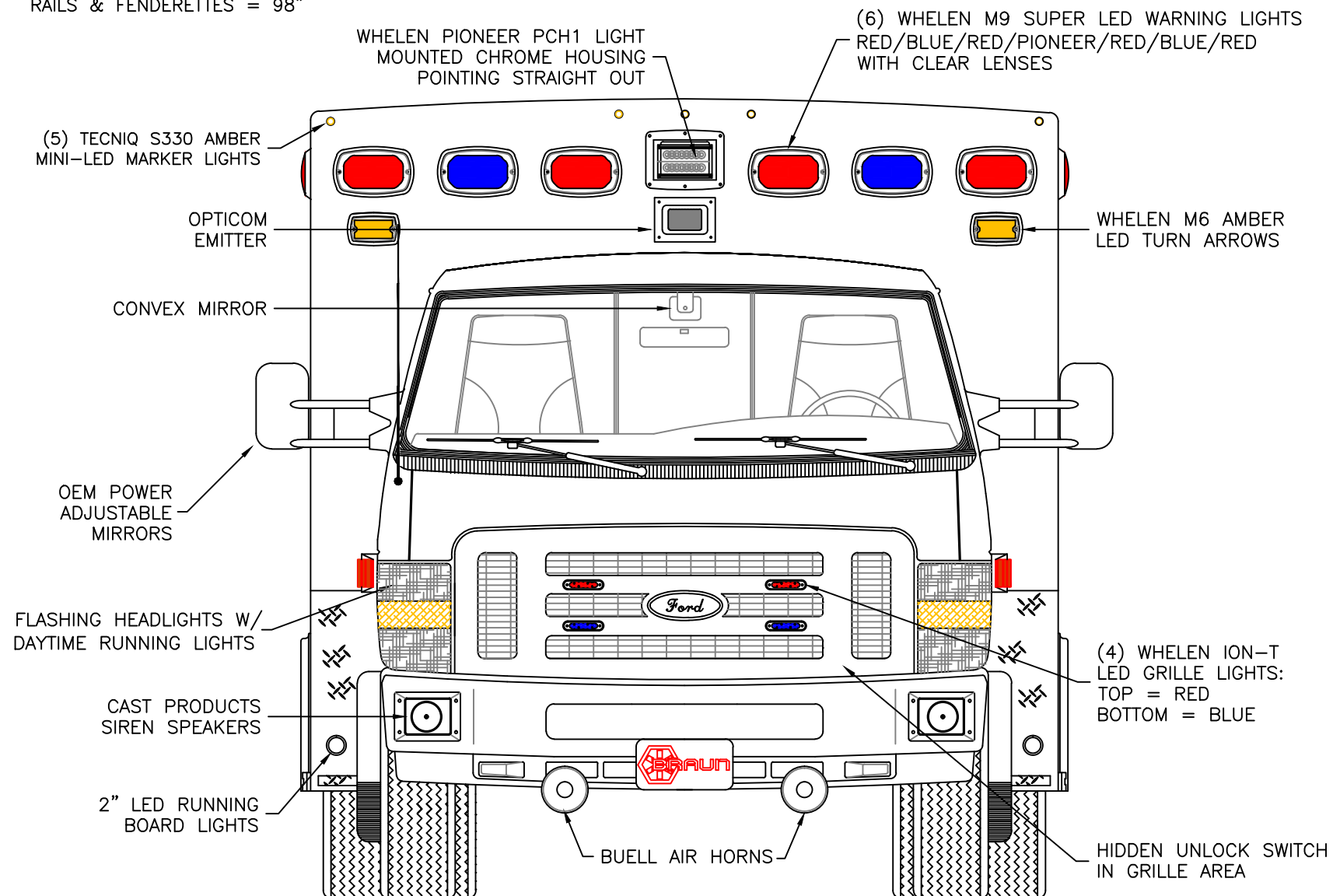


DIMENSIONS FOR OVERALL HEIGHT AND LENGTH ARE APPROXIMATE

OVERALL HEIGHT = 106.5"

OVERALL WIDTH WITH RUB

RAILS & FENDERETTES = 98"



THIS DRAWING IS FOR REPRESENTATIONAL PURPOSES ONLY. DETAILS ARE CONCEPTUAL AND ARE SUBJECT TO CHANGE DURING DESIGN AND CONSTRUCTION  
DIMENSIONS ARE APPROXIMATE UNLESS NOTED OTHERWISE TO MEET A SPECIFIC CUSTOMER NEED.

WOODBURY  
PUBLIC SAFETY



2019 FRONT EXTERIOR VIEW  
CHIEF XL-III/FORD E-450 CHASSIS-GAS ENGINE

DATE:  
5-8-19  
DWG.  
AAB

REV.  
A

DRAWING NO.  
WOODBURY-1

APPROVAL SIGNATURE:

DATE:

DIMENSIONS FOR OVERALL HEIGHT AND LENGTH ARE APPROXIMATE  
 OVERALL HEIGHT = 106.5"  
 OVERALL WIDTH WITH RUB  
 RAILS & FENDERETTES = 98"

WHELEN PIONEER PCH1 LIGHT MOUNTED  
 CHROME HOUSING AT A 15° ANGLE

(2) WHELEN M9 CLEAR LED LOAD LIGHTS

(5) TECNIQ S330 RED  
 MINI-LED MARKER LIGHTS

(4) WHELEN M9 SUPER LEDS  
 WITH CLEAR LENSES:  
 RED/BLUE/PIONEER/RED/BLUE

(2) WHELEN M9 SUPER LEDS  
 WITH CLEAR LENSES:  
 LEFT = RED/RIGHT = BLUE

LOCATION FOR  
 DOOR GRABBERS

LED LICENSE  
 PLATE LIGHT

DOCK BUMPERS

MUD FLAPS

WHELEN M6 LED TAIL LIGHTS IN  
 M6FC CHROME FLANGE HOUSINGS:  
 M6BTT RED BRAKE/TAIL  
 M6T AMBER TURN  
 M6BUW WHITE BACK-UP

MORryde SUSPENSION SYSTEM

INDEPENDENT BUMPER WITH  
 NON-SKID FLIP-UP CENTER  
 STEP AND COT PROTECTOR  
 ON STEP EDGE. TOW HOOKS  
 LOCATED BELOW STEP/BUMPER.

THIS DRAWING IS FOR REPRESENTATIONAL PURPOSES ONLY. DETAILS ARE CONCEPTUAL AND ARE SUBJECT TO CHANGE DURING DESIGN AND CONSTRUCTION  
 DIMENSIONS ARE APPROXIMATE UNLESS NOTED OTHERWISE TO MEET A SPECIFIC CUSTOMER NEED.

WOODBURY  
 PUBLIC SAFETY



2019 REAR EXTERIOR VIEW  
 CHIEF XL-III/FORD E-450 CHASSIS

DATE:  
 5-8-19  
 DWG.  
 AAB

REV.  
 A  
 DRAWING NO.  
 WOODBURY-2

DIMENSIONS FOR OVERALL HEIGHT AND LENGTH ARE APPROXIMATE  
 OVERALL HEIGHT = 106.5"  
 OVERALL LENGTH = 272.75"  
 MODULE LENGTH = 169

TECNIQ S330 RED MINI-LED MARKER  
 LIGHT TO ALSO FLASH WITH TURN SIGNAL

(2) WHELEN M9 RED SUPER LED  
 WARNING LIGHTS WITH CLEAR LENSES

KUSSMAUL 20 AMP  
 SUPER AUTO-EJECT  
 SHORELINE INLET WITH  
 RED INDICATOR LIGHT

WHELEN PIONEER PCH1 LIGHT MOUNTED  
 CHROME HOUSING AT A 15° ANGLE

WHELEN M7 RED SUPER  
 LED WITH CLEAR LENS  
 IN TILT HOUSING

EXHAUST VENT

SUCTION  
 PUMP

NON-SKID RUNNING  
 BOARD SURFACE

AIR HORN  
 COMPRESSOR

WHELEN M7 RED SUPER  
 LED WITH CLEAR LENS

STAINLESS STEEL  
 FUEL PROTECTOR

RED MINI-LED  
 LIGHTS ON REAR  
 FACING DOORS

#### COMPARTMENT

##### O.S.S #1

CLEAR OPENING: 70.00h x 18.25w  
 INSIDE DIM'S.: 79.75h x 24.50w x 20.75d  
 "M" OXYGEN STORAGE  
 STAIR CHAIR STORAGE  
 SINGLE BACKBOARD STORAGE  
 21.5h x 15w "L" SHAPED SHELF IN THE  
 UPPER RIGHT CORNER

##### O.S.S #2

CLEAR OPENING: 37.50h x 32.50w  
 INSIDE DIM'S.: 40.50h x 38.00w x 20.75d  
 (1) ADJUSTABLE SHELF

##### O.S.S #3

CLEAR OPENING: 35.50h x 30.75w  
 INSIDE DIM'S.: 38.50h x 34.50w x 20.75d  
 (1) ADJUSTABLE SHELF

-HURRICANE STRAP ON CAB DOOR

THIS DRAWING IS FOR REPRESENTATIONAL PURPOSES ONLY. DETAILS ARE CONCEPTUAL AND ARE SUBJECT TO CHANGE DURING DESIGN AND CONSTRUCTION  
 DIMENSIONS ARE APPROXIMATE UNLESS NOTED OTHERWISE TO MEET A SPECIFIC CUSTOMER NEED.

WOODBURY  
 PUBLIC SAFETY

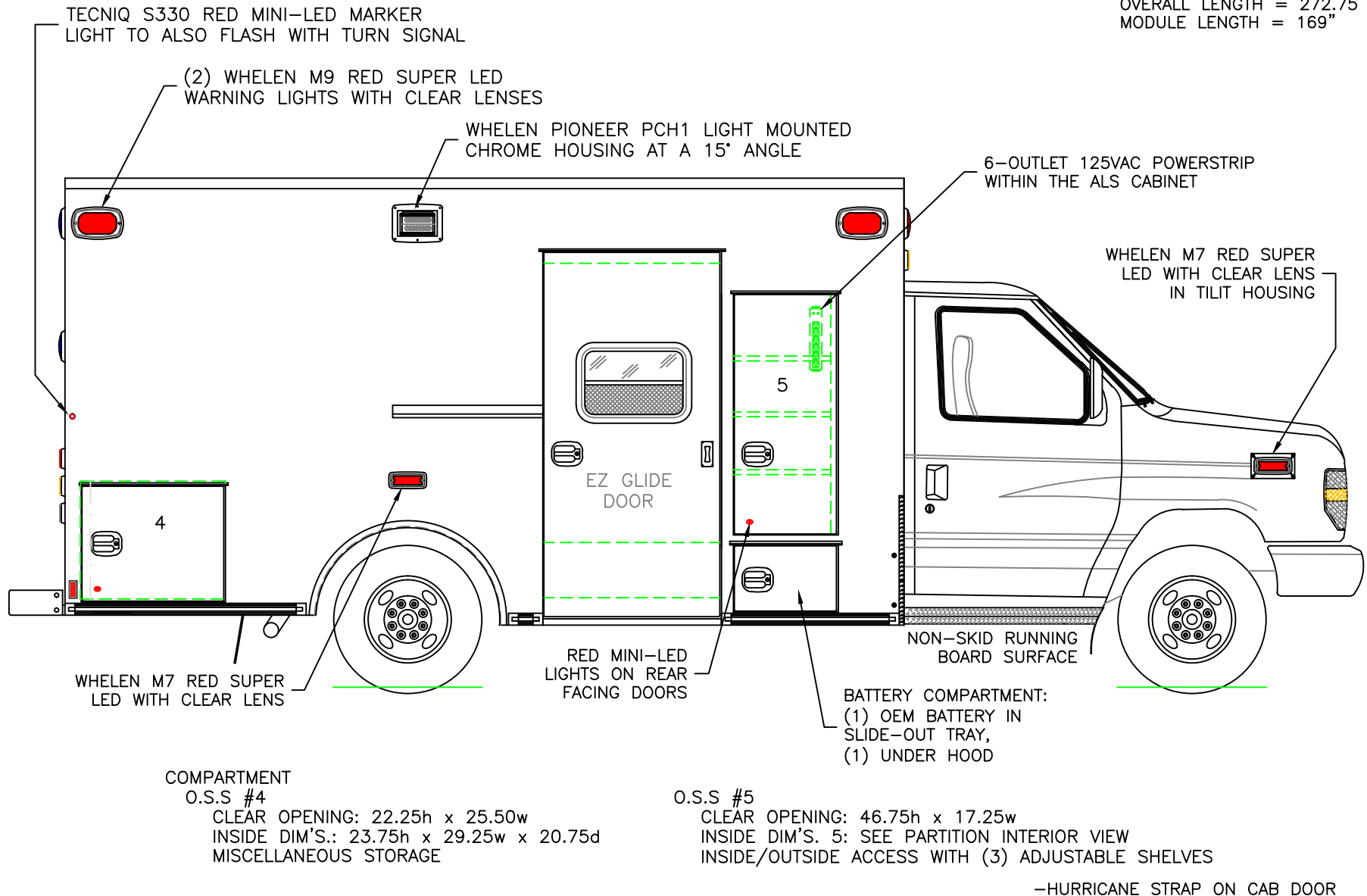


2019 STREETSIDE EXTERIOR VIEW  
 CHIEF XL-III/FORD E-450 CHASSIS

DATE:  
 5-8-19  
 DWG. AAB REV. A

DRAWING NO.  
 WOODBURY-3

DIMENSIONS FOR OVERALL HEIGHT AND LENGTH ARE APPROXIMATE  
 OVERALL HEIGHT = 106.5"  
 OVERALL LENGTH = 272.75"  
 MODULE LENGTH = 169"



THIS DRAWING IS FOR REPRESENTATIONAL PURPOSES ONLY. DETAILS ARE CONCEPTUAL AND ARE SUBJECT TO CHANGE DURING DESIGN AND CONSTRUCTION  
 DIMENSIONS ARE APPROXIMATE UNLESS NOTED OTHERWISE TO MEET A SPECIFIC CUSTOMER NEED.

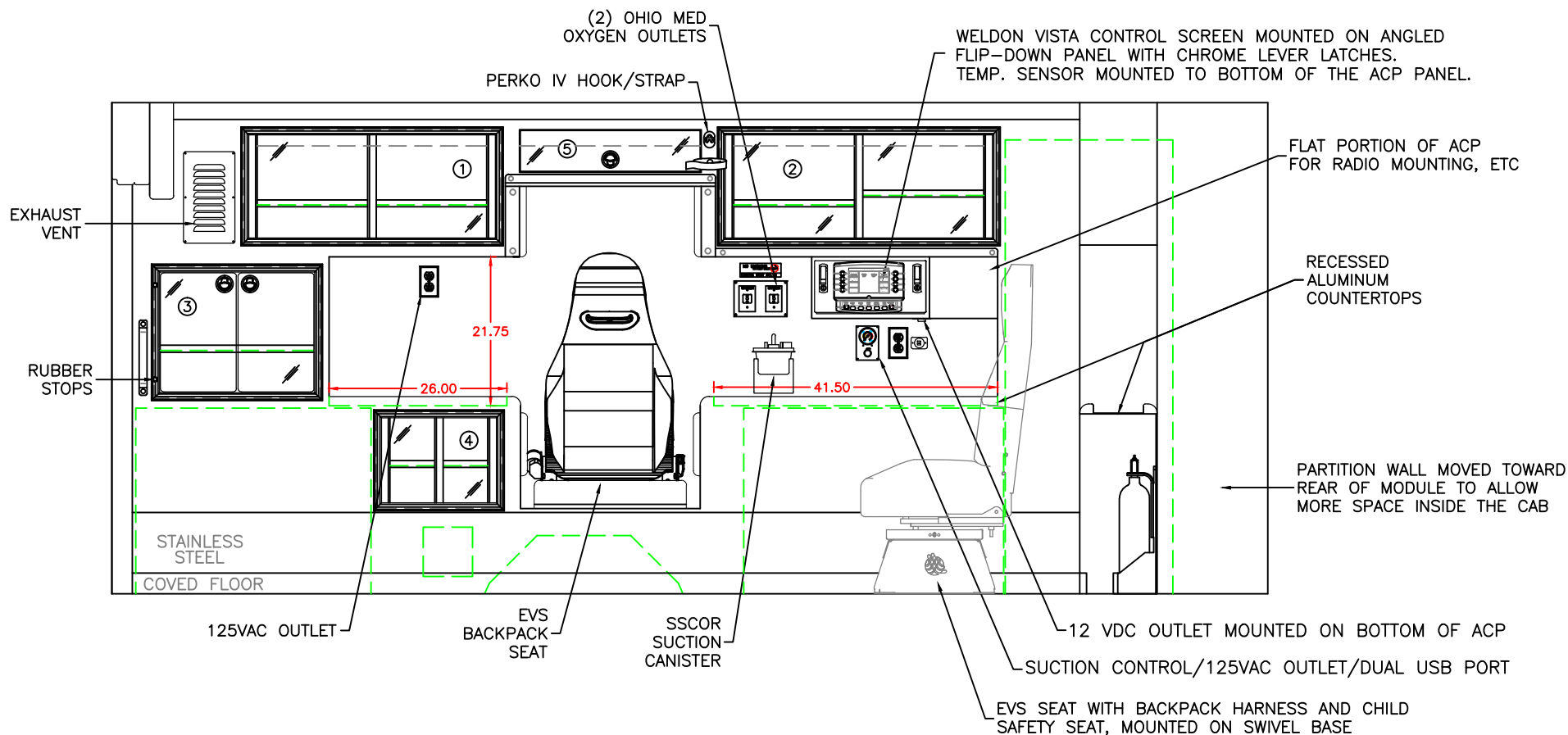
WOODBURY  
 PUBLIC SAFETY



2019 CURBSIDE EXTERIOR VIEW  
 CHIEF XL-III/FORD E-450 CHASSIS

DATE:  
 5-8-19  
 DWG.  
 AAB

DRAWING NO.  
 REV.  
 A  
 WOODBURY-4



#### COMPARTMENT

#1 DOOR OPENING: 15.00h x 36.00w  
 INSIDE DIMS: 16.50h x 37.50w x 17.25d  
 (1) ADJUSTABLE SHELF  
 SLIDING POLYCARBONATE DOORS  
 TOTAL CABINET WEIGHT RATING = 25 lbs.

#2 DOOR OPENING: 15.00h x 39.00w  
 INSIDE DIMS: 16.50h x 40.50w x 17.25d  
 (1) ADJ SHELF EACH SIDE OF CENTER DIVIDER  
 SLIDING POLYCARBONATE DOORS  
 TOTAL CABINET WEIGHT RATING = 25 lbs.

#3 DOOR OPENING: 17.50h x 22.50w  
 INSIDE DIMS: 19.00h x 24.00w x 17.25d  
 (1) ADJUSTABLE SHELF  
 HINGED POLYCARBONATE DOORS  
 LOCKING STAINLESS STEEL FLUSH PULL LATCHES  
 CABINET DOES NOT COMPLY WITH CN10

#4 DOOR OPENING: 12.50h x 16.75w  
 INSIDE DIMS: 14.00h x 18.25w x 17.25d  
 (1) ADJUSTABLE SHELF  
 SLIDING POLYCARBONATE DOORS  
 TOTAL CABINET WEIGHT RATING = 25 lbs.

#5 DOOR OPENING: 6.25h x 26.50w  
 INSIDE DIMS: 6.25h x 26.50w x 17.25d  
 HINGED POLY DOOR WITH HOLD-OPEN  
 LOCKING STAINLESS STEEL FLUSH PULL LATCH  
 CABINET DOES NOT COMPLY WITH CN10

CABINETS TO BE ALUMINUM

THIS DRAWING IS FOR REPRESENTATIONAL PURPOSES ONLY. DETAILS ARE CONCEPTUAL AND ARE SUBJECT TO CHANGE DURING DESIGN AND CONSTRUCTION  
 DIMENSIONS ARE APPROXIMATE UNLESS NOTED OTHERWISE TO MEET A SPECIFIC CUSTOMER NEED.

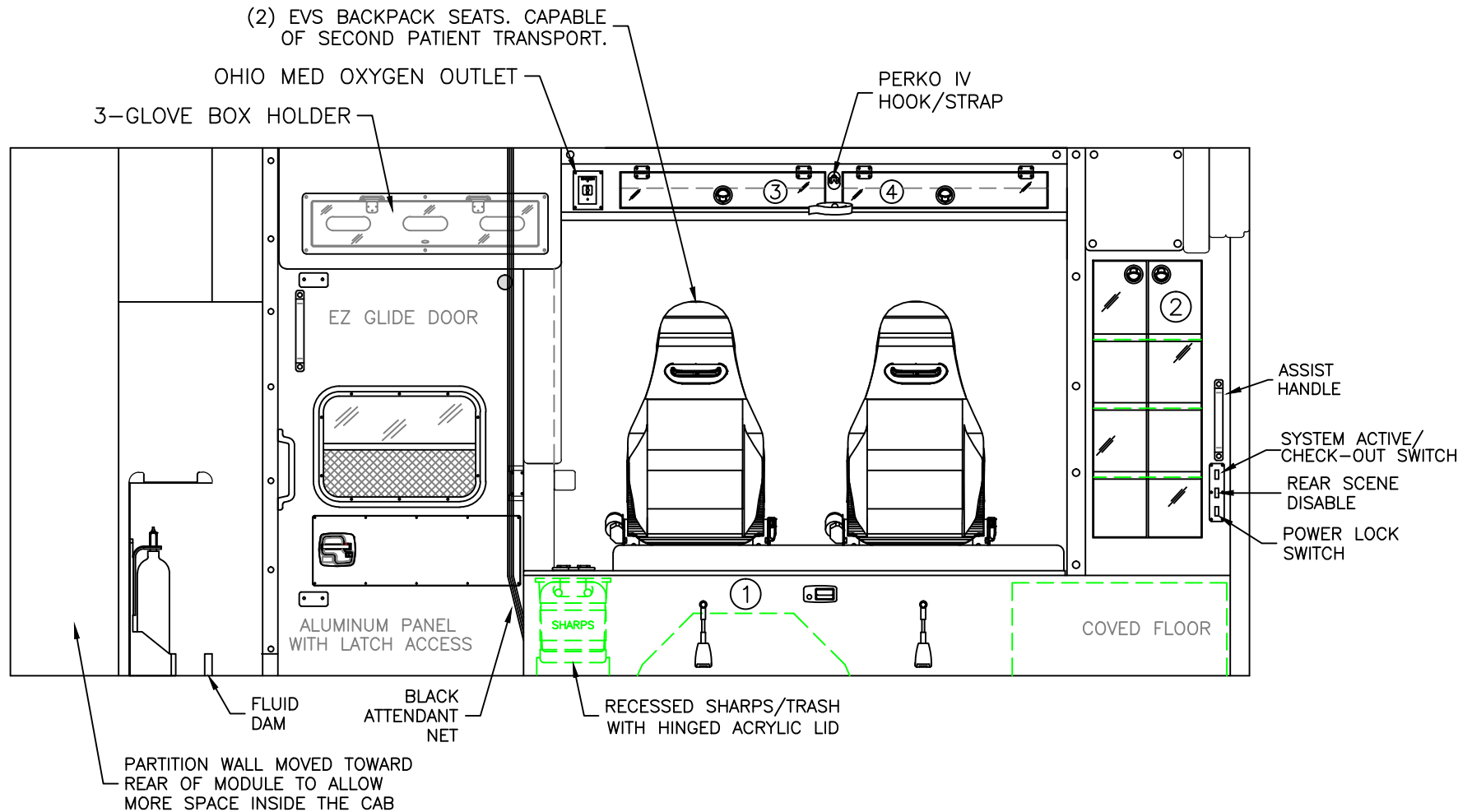
WOODBURY  
PUBLIC SAFETY



2019 STREETSIDE INTERIOR VIEW  
CHIEF XL-III

DATE:  
5-8-19  
DWG.  
AAB

DRAWING NO.  
REV.  
B  
WOODBURY-5



#### COMPARTMENT

#1 INSIDE DIM'S: 14.25h x 66.00w x 21.00d

#2 DOOR OPENING: 37.75h x 14.75w

INSIDE DIMS: 37.75h x 14.75w x 15.00d

(3) ADJUSTABLE SHELVES

HINGED POLYCARBONATE DOORS

LOCKING STAINLESS STEEL FLUSH PULL LATCHES

CABINET DOES NOT COMPLY WITH CN10

#3/#4 DOOR OPENING: 5.00h x 28.00w

INSIDE DIMS: 5.00h x 28.00w x 10.25d

HINGED POLYCARBONATE DOORS WITH FRICTION HINGES

LOCKING STAINLESS STEEL FLUSH PULL LATCH

43" MINIMUM HEADROOM BELOW THE CABINET

CABINETS DO NOT COMPLY WITH CN10

CABINETS TO BE ALUMINUM

THIS DRAWING IS FOR REPRESENTATIONAL PURPOSES ONLY. DETAILS ARE CONCEPTUAL AND ARE SUBJECT TO CHANGE DURING DESIGN AND CONSTRUCTION  
DIMENSIONS ARE APPROXIMATE UNLESS NOTED OTHERWISE TO MEET A SPECIFIC CUSTOMER NEED.

WOODBURY  
PUBLIC SAFETY



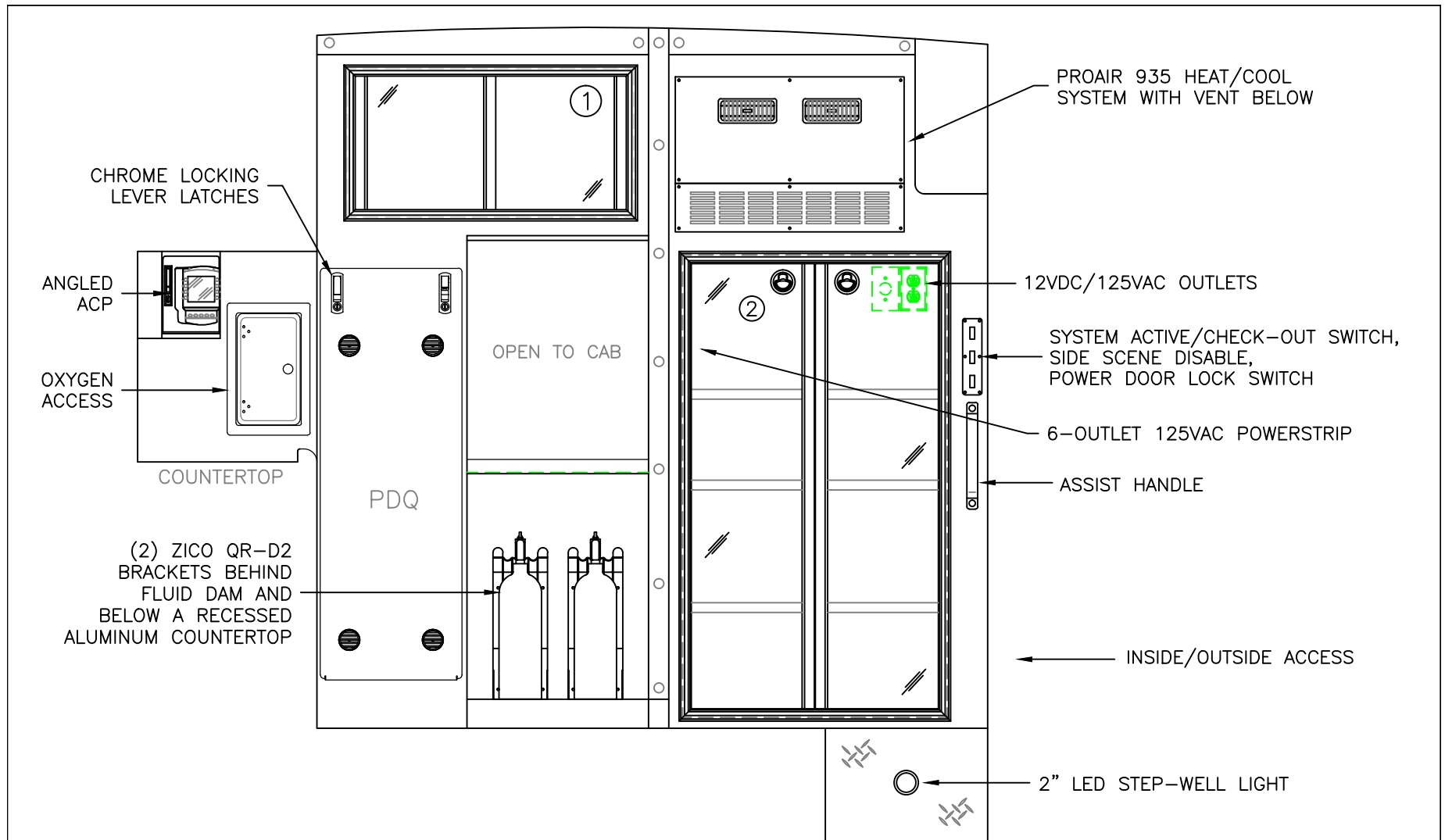
2019 CURBSIDE INTERIOR VIEW  
CHIEF XL-III

DATE:  
5-8-19

DWG. AAB REV. B

DRAWING NO.

WOODBURY-6



#### COMPARTMENT

#1 DOOR OPENING: 13.75h x 28.00w  
 INSIDE DIMS: 15.25h x 29.50w x 6.50d  
 SLIDING POLYCARBONATE DOORS  
 TOTAL CABINET WEIGHT RATING = 25 lbs.

#2 DOOR OPENINGS: 46.00h x 25.75w  
 INSIDE DIMS: 50.00h x 31.50w x 20.75d  
 HINGED POLYCARBONATE DOORS WITH FULL LENGTH HANDLES  
 LOCKING STAINLESS STEEL FLUSH PULL LATCHES  
 (3) ADJUSTABLE SHELVES  
 CABINET DOES NOT COMPLY WITH CN10

CABINETS TO BE ALUMINUM

THIS DRAWING IS FOR REPRESENTATIONAL PURPOSES ONLY. DETAILS ARE CONCEPTUAL AND ARE SUBJECT TO CHANGE DURING DESIGN AND CONSTRUCTION  
 DIMENSIONS ARE APPROXIMATE UNLESS NOTED OTHERWISE TO MEET A SPECIFIC CUSTOMER NEED.

WOODBURY  
PUBLIC SAFETY

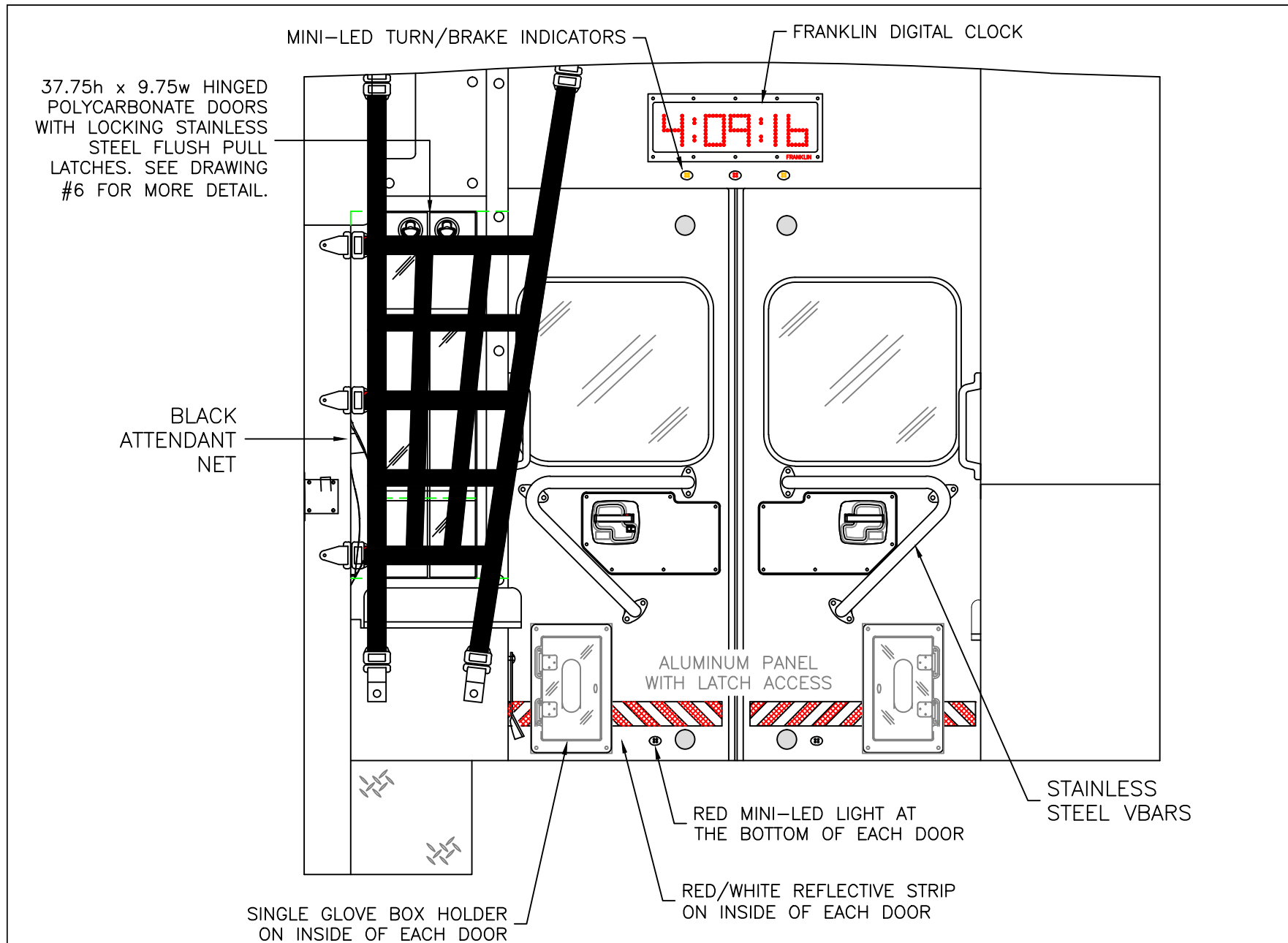


2019 PARTITION INTERIOR VIEW  
CHIEF XL-III

DATE:  
5-8-19  
DWG.  
AAB

REV.  
A

DRAWING NO.  
WOODBURY-7



THIS DRAWING IS FOR REPRESENTATIONAL PURPOSES ONLY. DETAILS ARE CONCEPTUAL AND ARE SUBJECT TO CHANGE DURING DESIGN AND CONSTRUCTION DIMENSIONS ARE APPROXIMATE UNLESS NOTED OTHERWISE TO MEET A SPECIFIC CUSTOMER NEED.

WOODBURY  
PUBLIC SAFETY



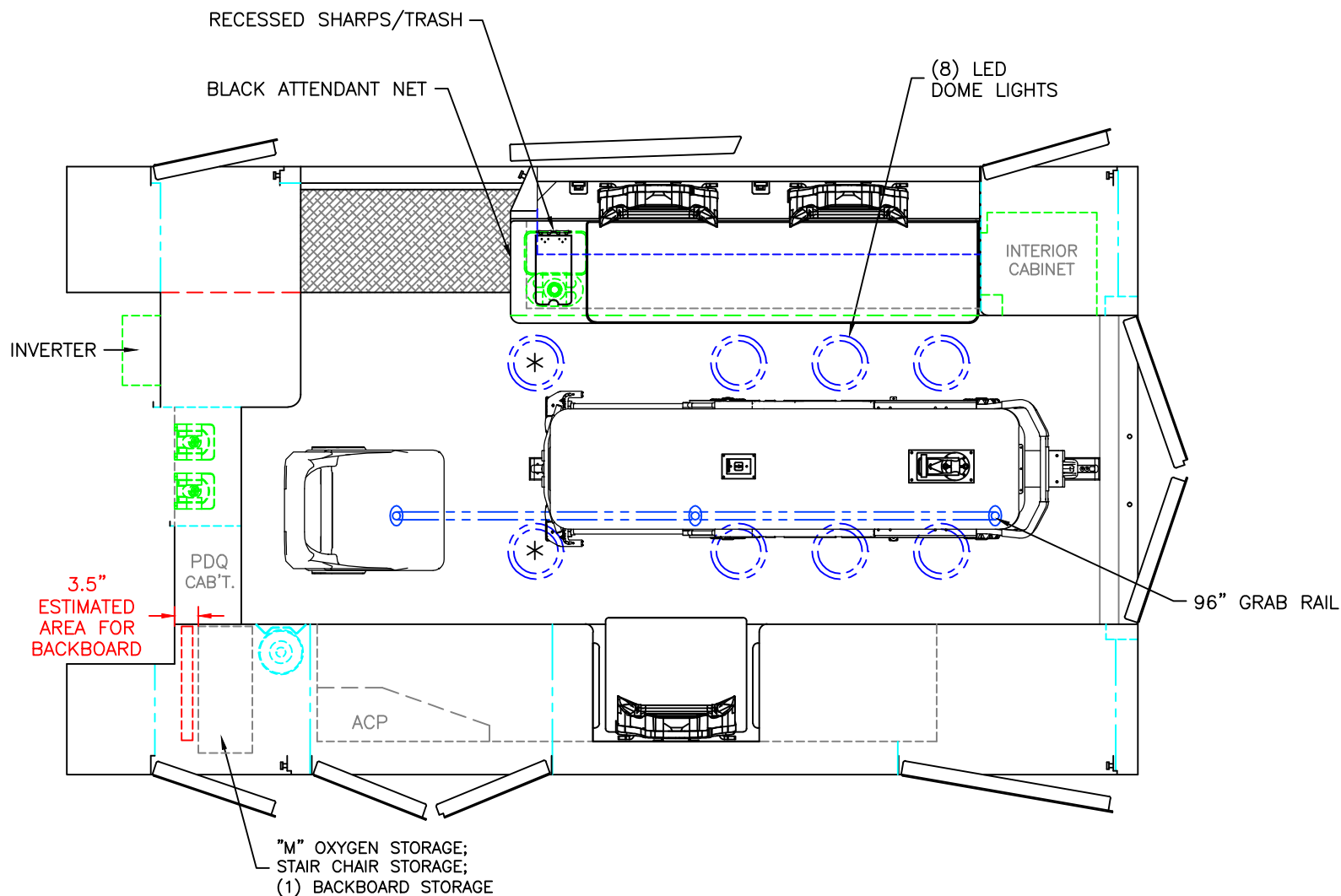
2019 REAR INTERIOR VIEW  
CHIEF XL-III

1:12

DATE:  
5-8-19  
DWG. AAB REV. B

DRAWING NO.  
WOODBURY-8





 = (1) RECESSED CEILING IV HANGER LOCATION

 = (1) CEILING OXYGEN OUTLET

\* (2) ANTENNA BASES LOCATED OUTBOARD OF DOME LIGHTS WITH COAX SERVICE LOOP

STRYKER POWERLOAD CENTER MOUNT COT HARDWARE  
(CUSTOMER SUPPLIED)

MODULE WIDTH = 96"  
MODULE LENGTH = 169"  
MODULE HEAD ROOM = 72"

THIS DRAWING IS FOR REPRESENTATIONAL PURPOSES ONLY. DETAILS ARE CONCEPTUAL AND ARE SUBJECT TO CHANGE DURING DESIGN AND CONSTRUCTION  
DIMENSIONS ARE APPROXIMATE UNLESS NOTED OTHERWISE TO MEET A SPECIFIC CUSTOMER NEED.

WOODBURY  
PUBLIC SAFETY



2019 FLOOR INTERIOR VIEW  
CHIEF XL-III

DATE:  
5-8-19  
DWG. AAB

REV. B

DRAWING NO.  
WOODBURY-9