

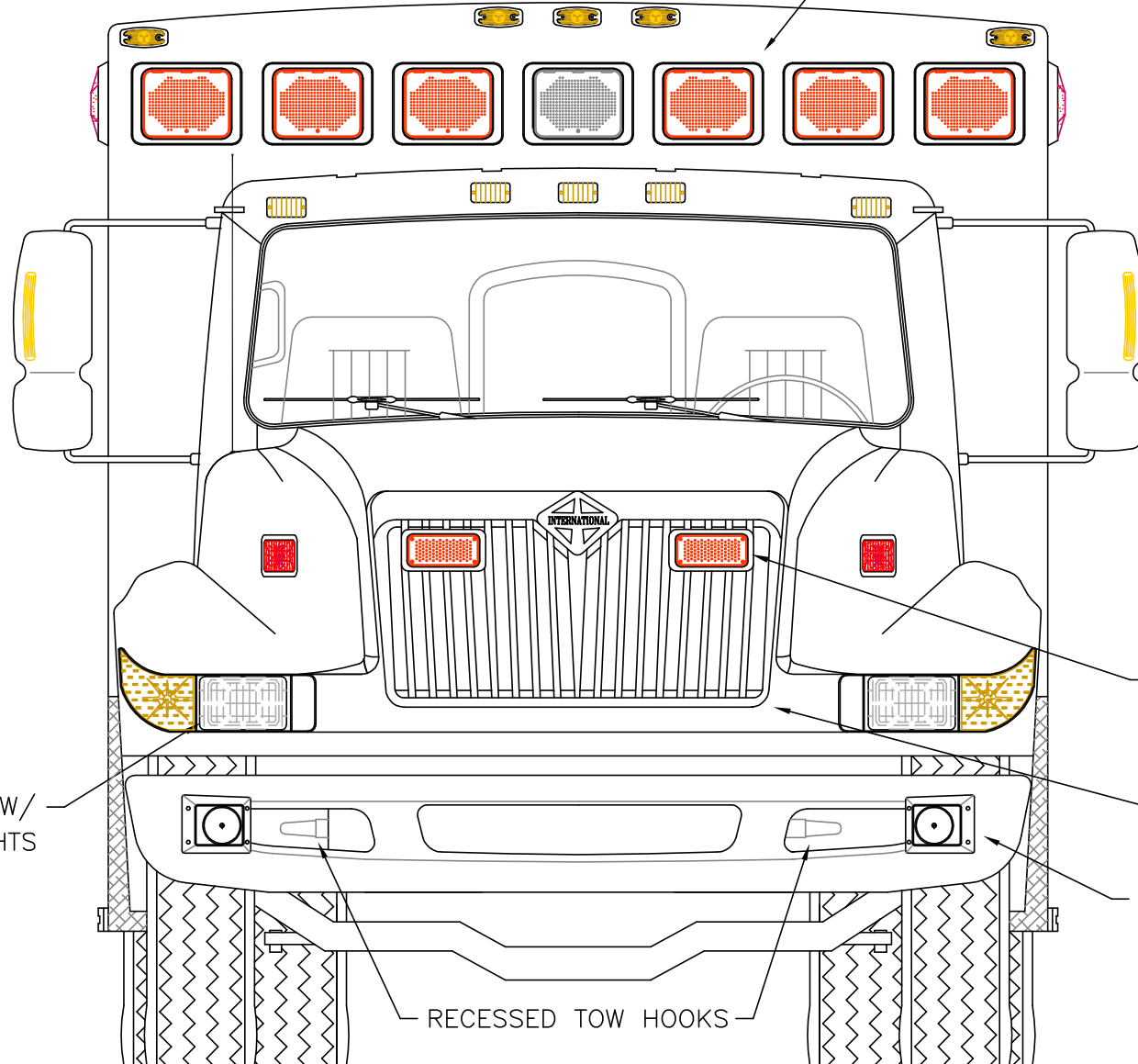
DIMENSIONS FOR OVERALL HEIGHT AND LENGTH ARE APPROXIMATE

OVERALL HEIGHT = 112"

OVERALL WIDTH WITH RUB

RAILS & FENDERETTES = 98"

(7) WHELEN 900 SUPER LED WARNING LIGHTS
RED/RED/RED/WHITE/RED/RED/RED
WITH CLEAR LENSES



(2) WHELEN 700
RED SUPER LED
GRILLE LIGHTS
WITH CLEAR LENSES

HIDDEN UNLOCK SWITCH
IN GRILLE AREA

(2) CAST PRODUCTS
100-WATT SIREN SPEAKERS
RECESSED INTO BUMPER

FLASHING HEADLIGHTS W/
DAYTIME RUNNING LIGHTS

RECESSED TOW HOOKS

THIS DRAWING IS FOR REPRESENTATIONAL PURPOSES ONLY. DETAILS ARE CONCEPTUAL AND ARE SUBJECT TO CHANGE DURING DESIGN AND CONSTRUCTION
DIMENSIONS ARE APPROXIMATE UNLESS NOTED OTHERWISE TO MEET A SPECIFIC CUSTOMER NEED.



2013 FRONT EXTERIOR VIEW
SUPER CHIEF-1/INTERNATIONAL 4300LP CHASSIS

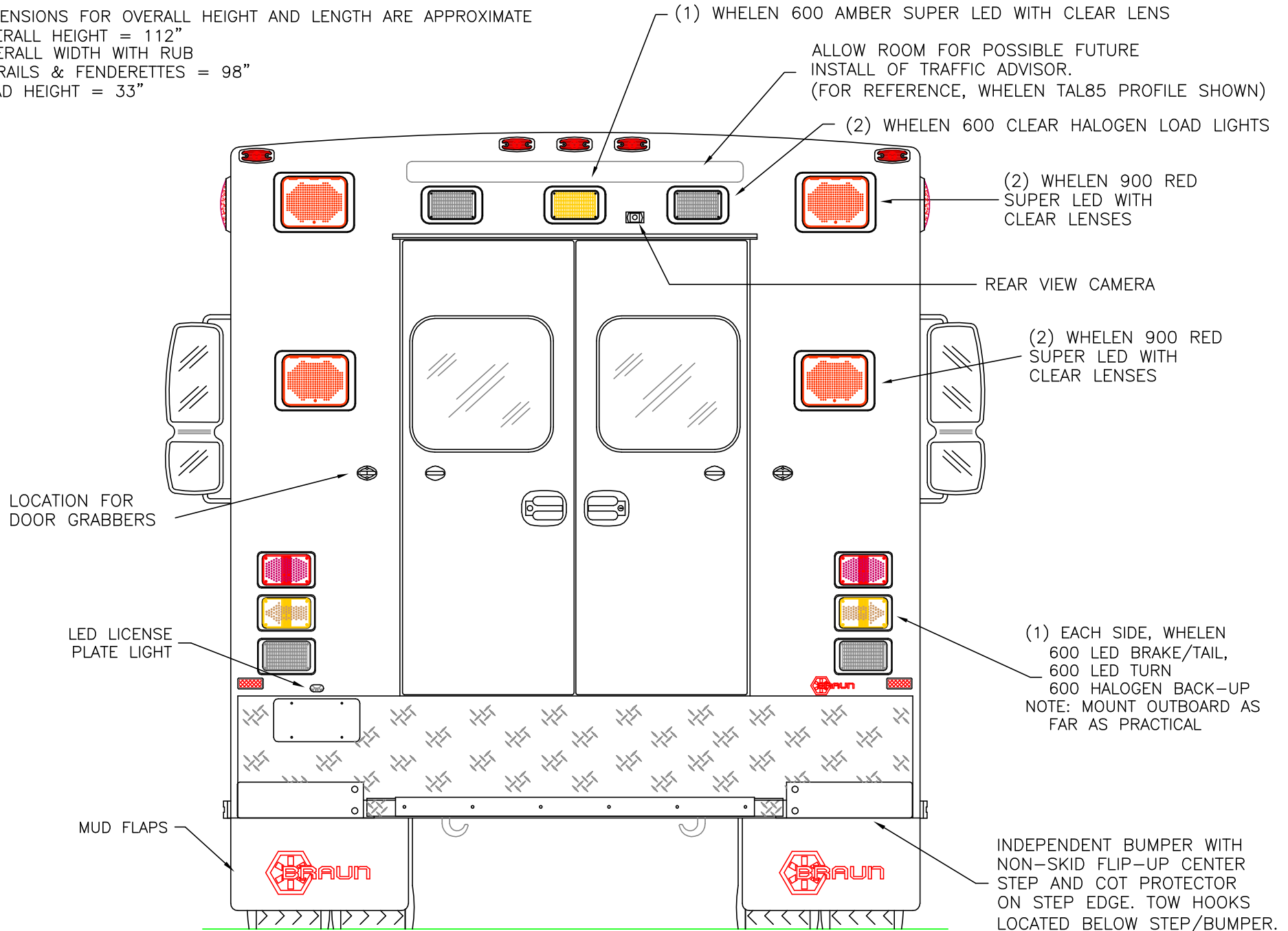
1:18

DATE:	22 OCT 12
DWG.	REV.
GLF	NR

DRAWING NO.
13SC4300-1

DIMENSIONS FOR OVERALL HEIGHT AND LENGTH ARE APPROXIMATE
 OVERALL HEIGHT = 112"
 OVERALL WIDTH WITH RUB
 RAILS & FENDERETTES = 98"
 LOAD HEIGHT = 33"

ALLOW ROOM FOR POSSIBLE FUTURE
 INSTALL OF TRAFFIC ADVISOR.
 (FOR REFERENCE, WHELEN TAL85 PROFILE SHOWN)



THIS DRAWING IS FOR REPRESENTATIONAL PURPOSES ONLY. DETAILS ARE CONCEPTUAL AND ARE SUBJECT TO CHANGE DURING DESIGN AND CONSTRUCTION
 DIMENSIONS ARE APPROXIMATE UNLESS NOTED OTHERWISE TO MEET A SPECIFIC CUSTOMER NEED.



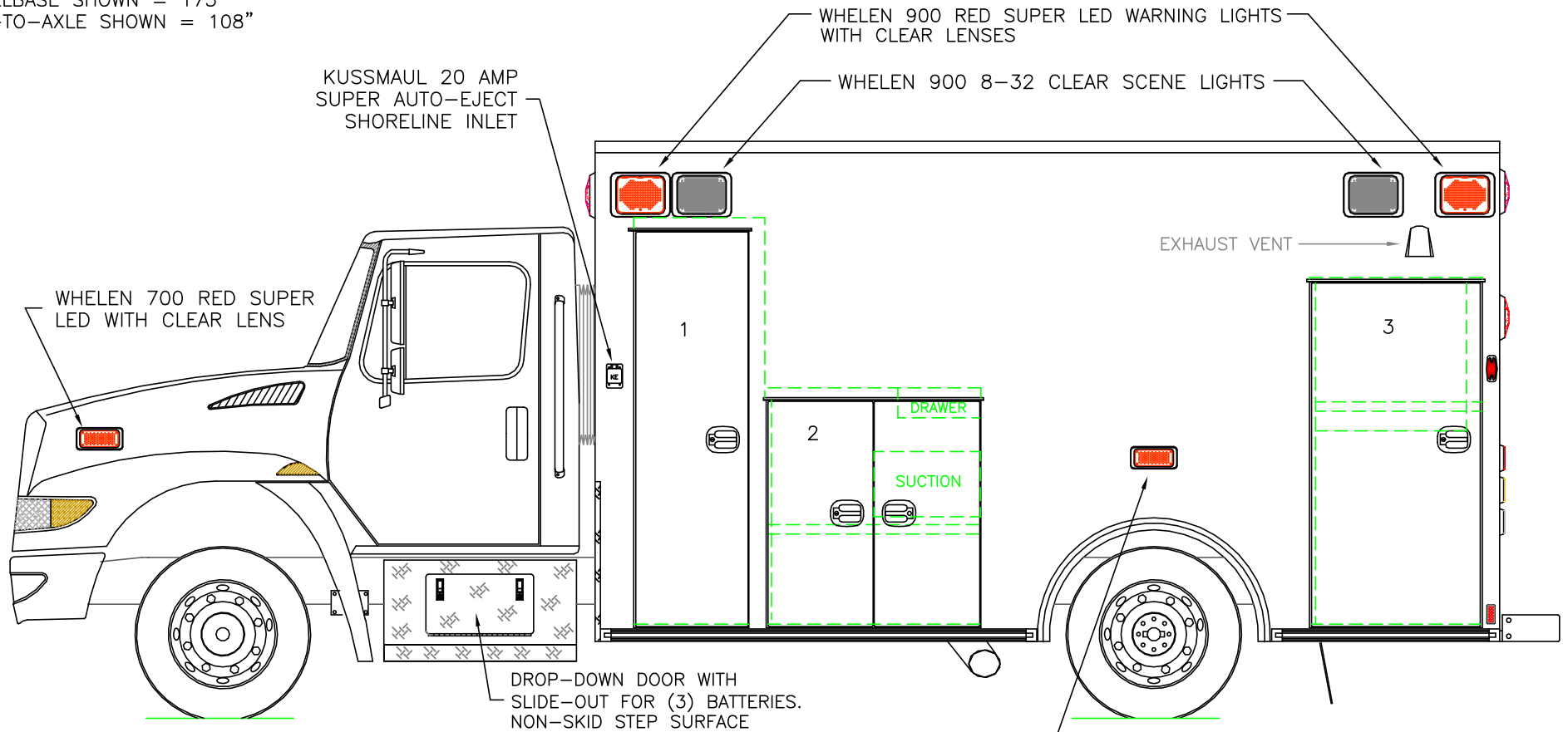
2013 REAR EXTERIOR VIEW
 SUPER CHIEF-1/INTERNATIONAL 4300LP CHASSIS

1:18

DATE: 22 OCT 12	
DWG. GLF	REV. NR

DRAWING NO. 13SC4300-2

DIMENSIONS FOR OVERALL HEIGHT AND LENGTH ARE APPROXIMATE
 OVERALL HEIGHT = 112"
 OVERALL LENGTH = 291.5"
 MODULE LENGTH = 170"
 WHEELBASE SHOWN = 175"
 CAB-TO-AXLE SHOWN = 108"



COMPARTMENT
 O.S.S #1
 CLEAR OPENING: 73.00h x 18.25w
 INSIDE DIM'S.: 76.50h x 24.50w x 21.75d
 BACKBOARD/SCOOP STORAGE

O.S.S #2
 CLEAR OPENING: 41.25h x 34.75w
 INSIDE DIM'S.: 44.50h x 39.50w x 21.75d
 (1) ADJUSTABLE SHELF

O.S.S #3
 CLEAR OPENING: 63.50h x 28.75w
 INSIDE DIM'S.: 65.25h x 31.25w x 21.75d
 INSIDE/OUTSIDE ACCESS
 (1) ADJUSTABLE SHELF

COMPARTMENTS WITH ADJUSTABLE SHELVES HAVE
 RECESSED UNISTRUT SHELF TRACK

THIS DRAWING IS FOR REPRESENTATIONAL PURPOSES ONLY. DETAILS ARE CONCEPTUAL AND ARE SUBJECT TO CHANGE DURING DESIGN AND CONSTRUCTION
 DIMENSIONS ARE APPROXIMATE UNLESS NOTED OTHERWISE TO MEET A SPECIFIC CUSTOMER NEED.

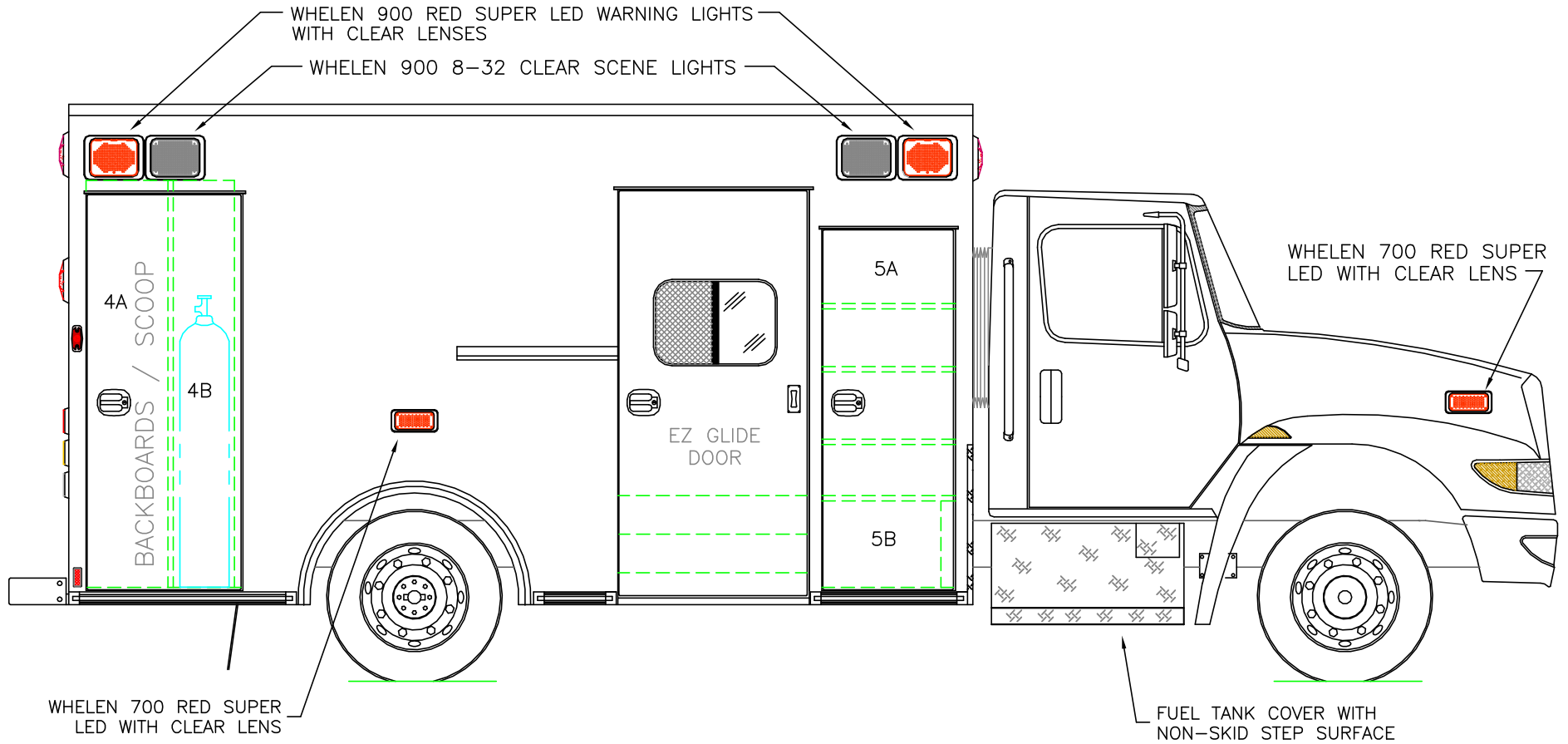


2013 STREETSIDE EXTERIOR VIEW
 SUPER CHIEF-I/INTERNATIONAL 4300LP CHASSIS

DATE:	22 OCT 12	DRAWING NO.	13SC4300-3
DWG. REV	GLF NR		

1:30

DIMENSIONS FOR OVERALL HEIGHT AND LENGTH ARE APPROXIMATE
 OVERALL HEIGHT = 112"
 OVERALL LENGTH = 291.5"
 MODULE LENGTH = 170"
 WHEELBASE SHOWN = 175"
 CAB-TO-AXLE SHOWN = 108"



WHELEN 700 RED SUPER LED WITH CLEAR LENS

COMPARTMENT
O.S.S #4

CLEAR OPENING: 73.00h x 25.25w
 INSIDE DIM'S. 4A: 76.50h x 14.75w x 21.75d
 BACKBOARD/SCOOP STORAGE

INSIDE DIM'S. 4B: 76.50h x 11.50w x 13.00d
 OXYGEN CYLINDER STORAGE

FUEL TANK COVER WITH
NON-SKID STEP SURFACE

O.S.S #5

CLEAR OPENING: 66.50h x 21.50w
 INSIDE DIM'S. 5A: SEE PARTITION INTERIOR VIEW
 INSIDE/OUTSIDE STORAGE WITH (3) ADJUSTABLE SHELVES

INSIDE DIM'S. 5B: 16.00h x 24.75w x 19.00d

COMPARTMENTS WITH ADJUSTABLE SHELVES HAVE
RECESSED UNISTRUT SHELF TRACK

THIS DRAWING IS FOR REPRESENTATIONAL PURPOSES ONLY. DETAILS ARE CONCEPTUAL AND ARE SUBJECT TO CHANGE DURING DESIGN AND CONSTRUCTION
 DIMENSIONS ARE APPROXIMATE UNLESS NOTED OTHERWISE TO MEET A SPECIFIC CUSTOMER NEED.

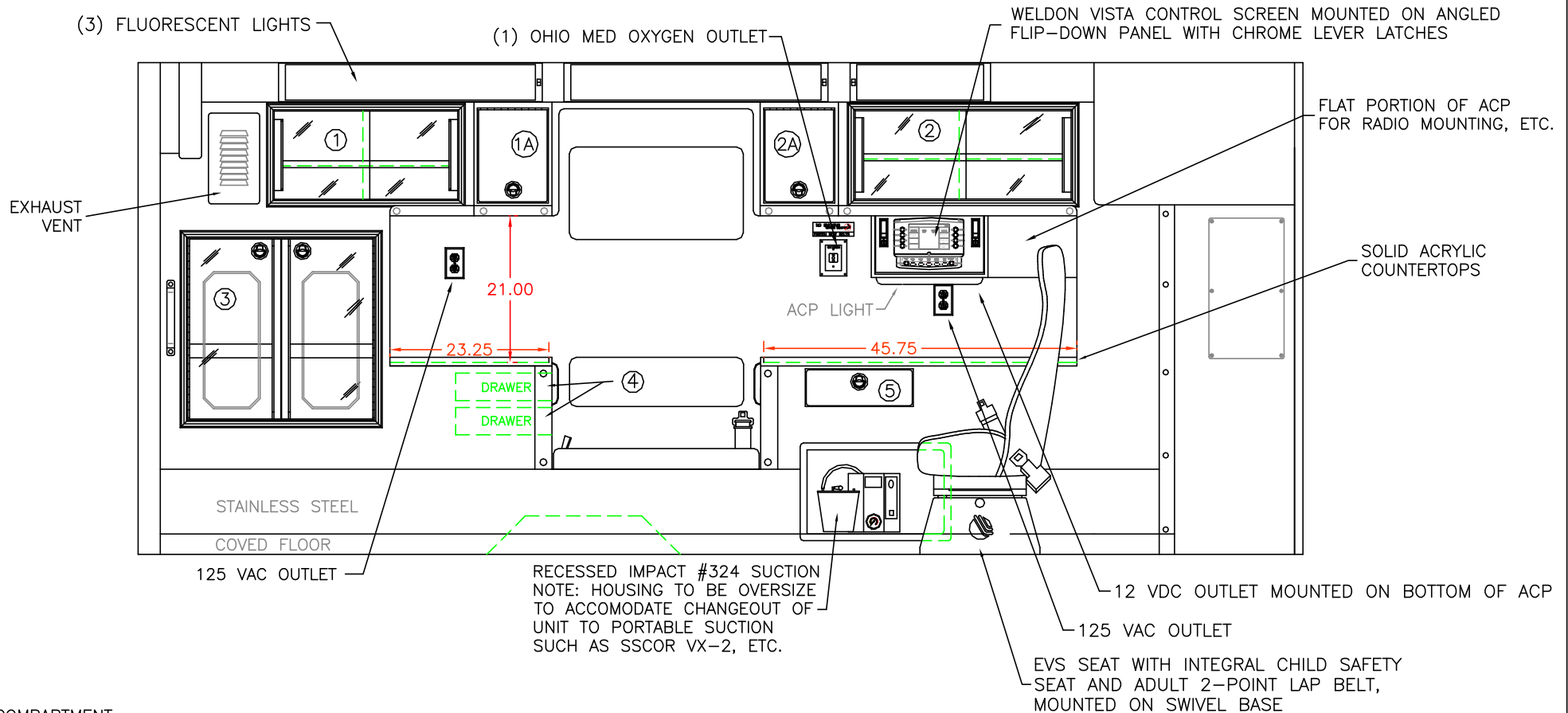


2013 CURBSIDE EXTERIOR VIEW
 SUPER CHIEF-1/INTERNATIONAL 4300LP CHASSIS

1:30

DATE:	22 OCT 12
DWG.:	GLF
REV.:	NR

DRAWING NO.	13SC4300-4
-------------	------------



COMPARTMENT

#1 DOOR OPENING: 13.00h x 26.75w
 INSIDE DIMS: 14.75h x 28.50w x 19.50d
 (1) ADJUSTABLE SHELF
 SLIDING ACRYLIC CABINET DOORS

#2 DOOR OPENING: 13.00h x 31.50w
 INSIDE DIMS: 14.75h x 33.25w x 19.50d
 (1) ADJUSTABLE SHELF
 SLIDING ACRYLIC CABINET DOORS

#1A & #2A ANGLED-FACE CABINETS WITH LIFT-UP DOORS
 LOCKING STAINLESS STEEL FLUSH PULL LATCHES
 OPENING DIMS: 13.75h x 12.00w
 EACH DOOR TO BE DRY-ERASE BOARD WITH HOLD-OPEN

#3 DOOR OPENING: 26.50h x 27.25w
 INSIDE DIMS: O.S.S. #3
 RECESSED .375" ACRYLIC DOORS WITH FULL LENGTH HANDLES
 LOCKING STAINLESS STEEL FLUSH PULL LATCHES

#4 = TWO DRAWERS THAT PULL-OUT TOWARD CPR SEAT
 INSIDE DIMS: 3.00h x 9.75w x 13.00d
 LOCKING STAINLESS STEEL FLUSH PULL LATCHES

#5 PULL-OUT DRAWER WITH HINGED ACRYLIC WRITING SURFACE
 INSIDE DIMS: 4.50h x 14.50w x 13.25d
 LOCKING STAINLESS STEEL FLUSH PULL LATCH

CABINETS TO BE ALUMINUM
 CABINET SHELF TRACK TO BE RECESSED
 MINIMIZE EXPOSED FASTENERS

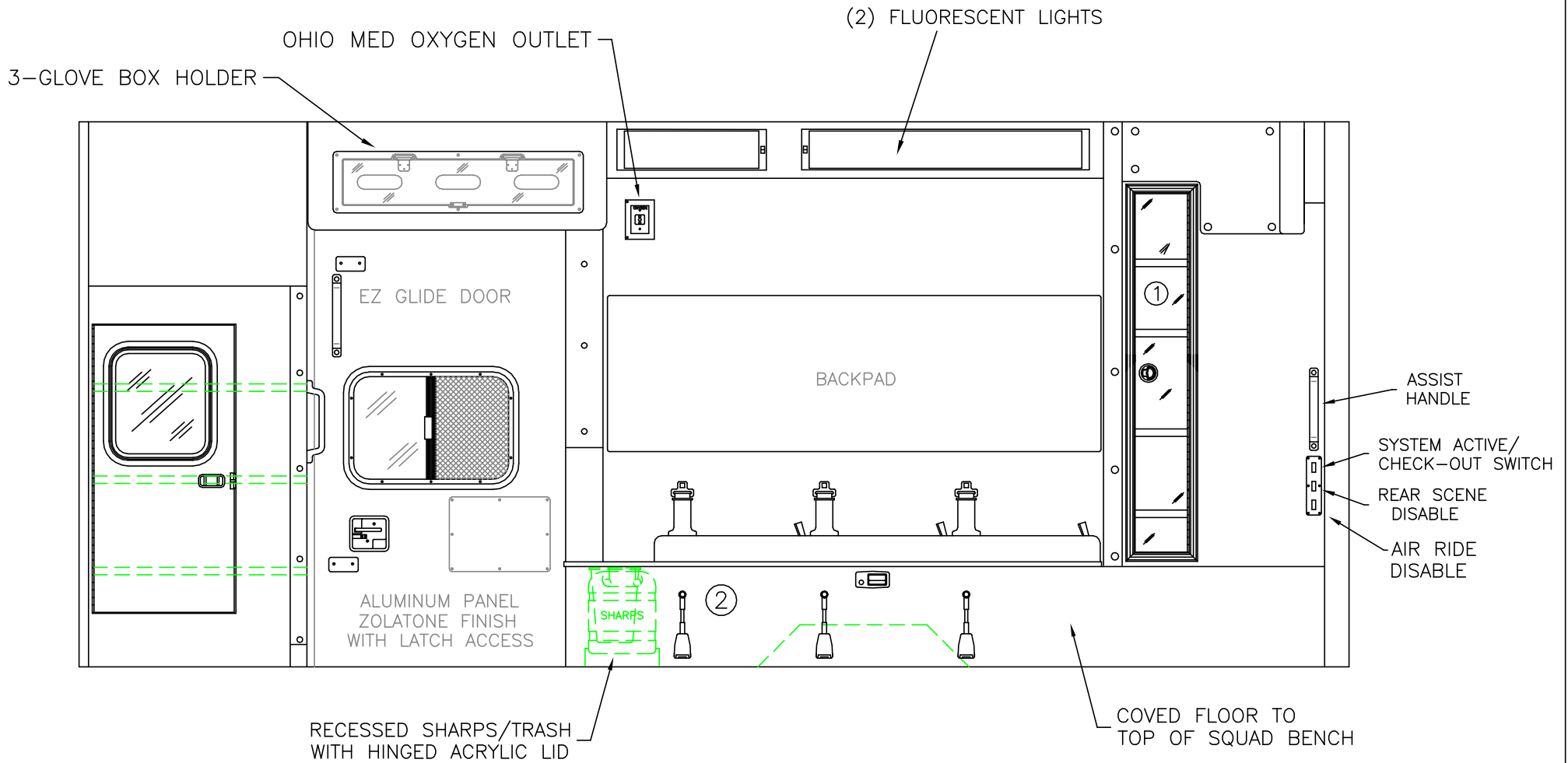
THIS DRAWING IS FOR REPRESENTATIONAL PURPOSES ONLY. DETAILS ARE CONCEPTUAL AND ARE SUBJECT TO CHANGE DURING DESIGN AND CONSTRUCTION
 DIMENSIONS ARE APPROXIMATE UNLESS NOTED OTHERWISE TO MEET A SPECIFIC CUSTOMER NEED.



2013 STREETSIDE INTERIOR VIEW
 SUPER CHIEF-I

DATE:	23 OCT 12	DRAWING NO.	13SC4300-5
DWG.	GLF	REV.	

1:22



COMPARTMENT

- #1 DOOR OPENING: 48.00h x 7.25w
- INSIDE DIMS: 50.00h x 13.25w x 7.50d
- RECESSED .375" ACRYLIC DOOR
- (1) LOCKING STAINLESS STEEL FLUSH PULL LATCH
- (4) ADJUSTABLE SHELVES

- #2 INSIDE DIM'S: 14.25h x 72.00w x 21.00d

CABINETS TO BE ALUMINUM

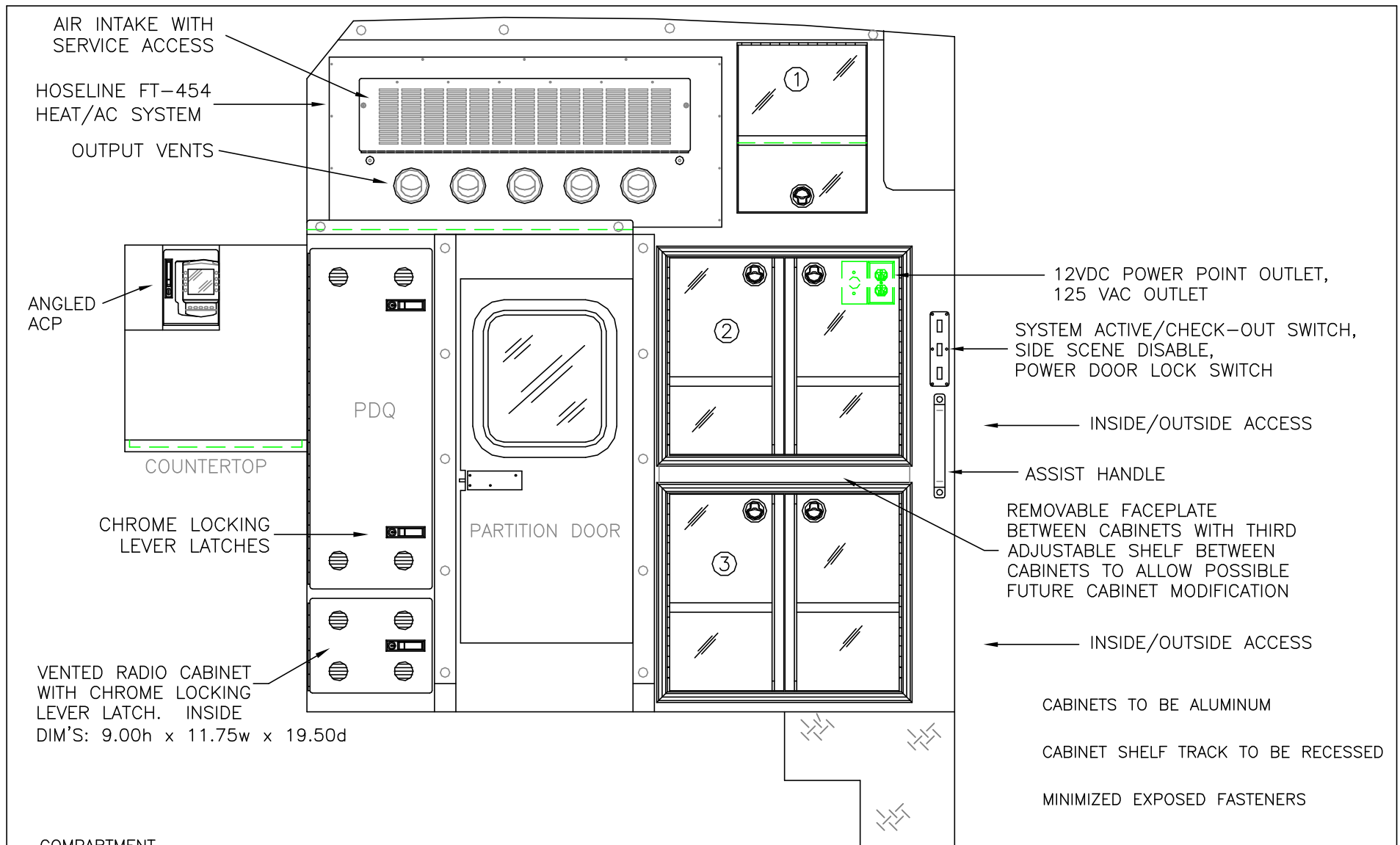
CABINET SHELF TRACK TO BE RECESSED
MINIMIZE EXPOSED FASTENERS

THIS DRAWING IS FOR REPRESENTATIONAL PURPOSES ONLY. DETAILS ARE CONCEPTUAL AND ARE SUBJECT TO CHANGE DURING DESIGN AND CONSTRUCTION
DIMENSIONS ARE APPROXIMATE UNLESS NOTED OTHERWISE TO MEET A SPECIFIC CUSTOMER NEED.



2013 CURBSIDE INTERIOR VIEW
SUPER CHIEF-I

DATE:	23 OCT 12		DRAWING NO.
DWG.	GLF	REV.	NR
1:20	13SC4300-6		



COMPARTMENT

#1 DOOR OPENING: 18.00h x 13.75w
 INSIDE DIMS: 18.00h x 13.75w x 23.00d
 LIFT UP ACRYLIC DOOR WITH HOLD-OPEN
 (1) ADJUSTABLE SHELF
 LOCKING STAINLESS STEEL FLUSH PULL LATCH

#2 & #3 DOOR OPENINGS: 21.00h x 24.75w
 INSIDE DIMS: 24.75h x 31.25w x 28.00d
 RECESSED .375" ACRYLIC DOORS WITH FULL LENGTH HANDLES
 LOCKING STAINLESS STEEL FLUSH PULL LATCHES
 (1) ADJUSTABLE SHELF PER COMPARTMENT
 (1) ADJUSTABLE SHELF BETWEEN COMPARTMENTS FOR A TOTAL OF (3) SHELVES
 REMOVABLE FACEPLATE BETWEEN #2 & #3 COMPARTMENTS
 FOR POSSIBLE FUTURE CHANGE TO FULL-HEIGHT DOORS

THIS DRAWING IS FOR REPRESENTATIONAL PURPOSES ONLY. DETAILS ARE CONCEPTUAL AND ARE SUBJECT TO CHANGE DURING DESIGN AND CONSTRUCTION DIMENSIONS ARE APPROXIMATE UNLESS NOTED OTHERWISE TO MEET A SPECIFIC CUSTOMER NEED.

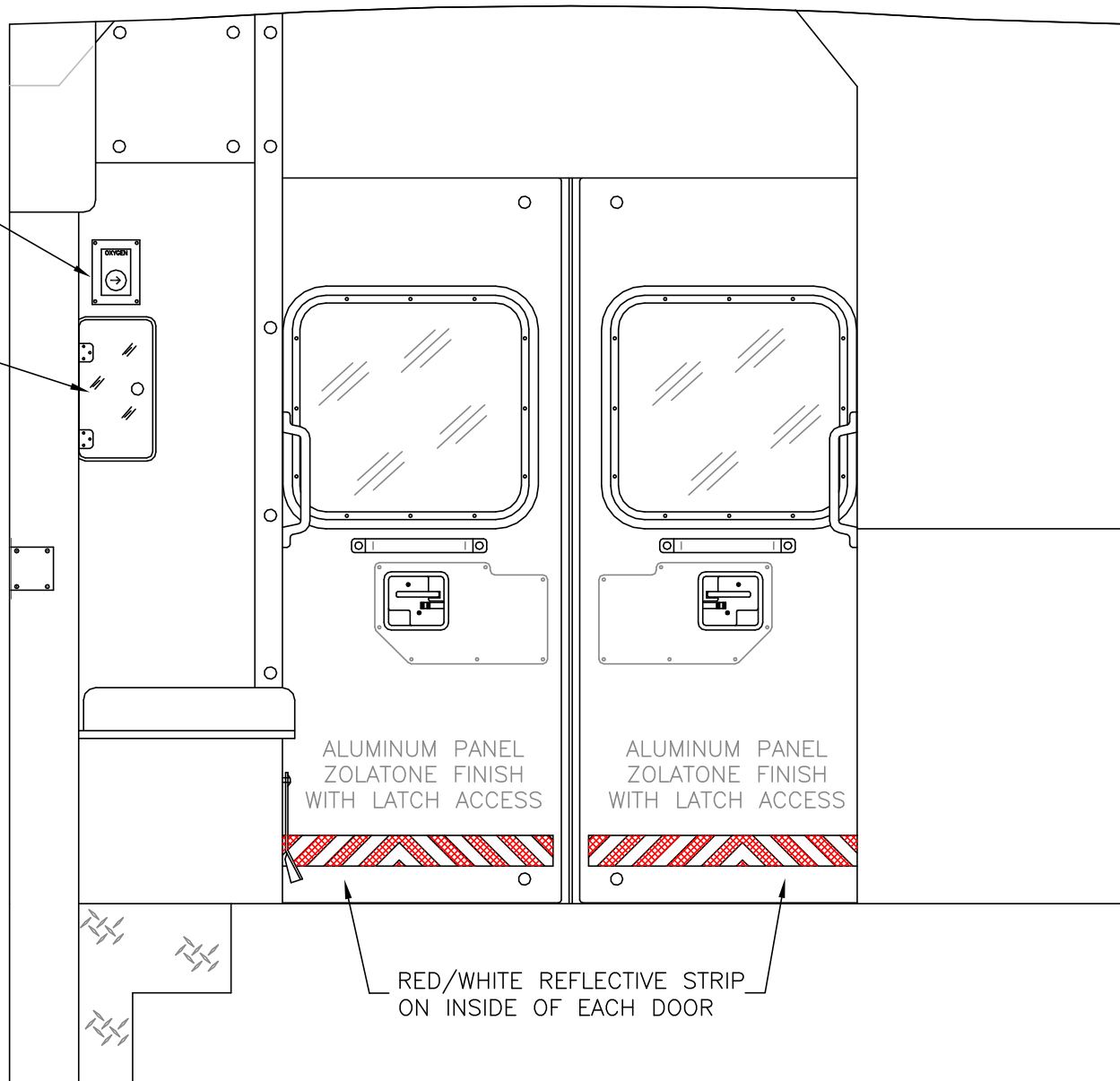


2013 PARTITION INTERIOR VIEW
 SUPER CHIEF-I

DATE:		DRAWING NO.	
23 OCT 12		13SC4300-7	
DWG.	REV.		
GLF	NR		

OXYGEN BYPASS

OXYGEN ACCESS



ALUMINUM PANEL
ZOLATONE FINISH
WITH LATCH ACCESS

ALUMINUM PANEL
ZOLATONE FINISH
WITH LATCH ACCESS

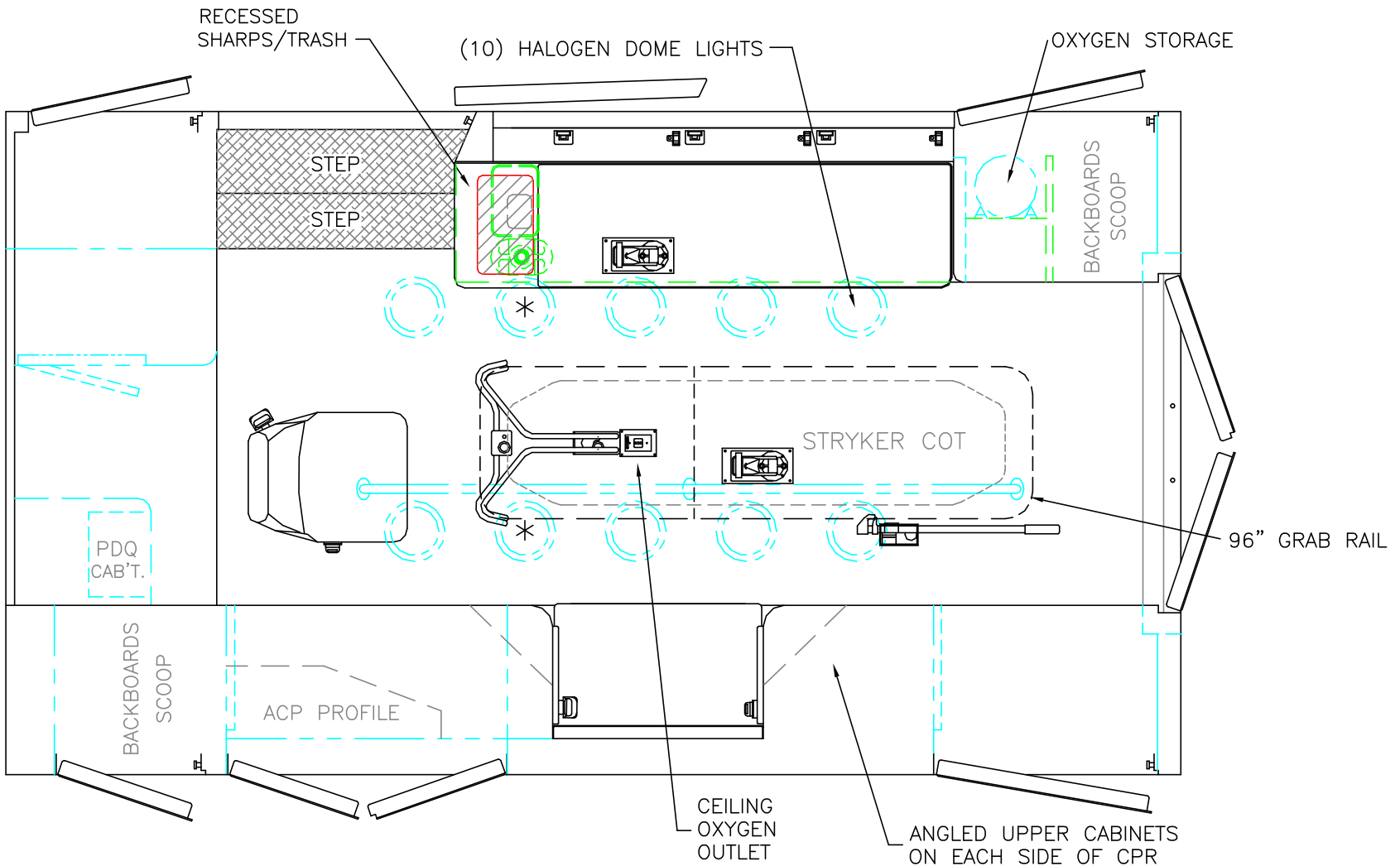
RED/WHITE REFLECTIVE STRIP
ON INSIDE OF EACH DOOR

THIS DRAWING IS FOR REPRESENTATIONAL PURPOSES ONLY. DETAILS ARE CONCEPTUAL AND ARE SUBJECT TO CHANGE DURING DESIGN AND CONSTRUCTION DIMENSIONS ARE APPROXIMATE UNLESS NOTED OTHERWISE TO MEET A SPECIFIC CUSTOMER NEED.



2013 REAR INTERIOR VIEW
SUPER CHIEF-1

DATE:	23 OCT 12		DRAWING NO.
	DWG.	REV.	
1:14	GLF	NR	



 = (2) RECESSED CEILING IV HANGER LOCATIONS

* (2) ANTENNA BASES LOCATED OUTBOARD OF DOME LIGHTS WITH COAX SERVICE LOOP

STRYKER CENTER MOUNT COT HARDWARE

MODULE WIDTH = 96"
 MODULE LENGTH = 170"
 MODULE HEAD ROOM = 73.5"

THIS DRAWING IS FOR REPRESENTATIONAL PURPOSES ONLY. DETAILS ARE CONCEPTUAL AND ARE SUBJECT TO CHANGE DURING DESIGN AND CONSTRUCTION DIMENSIONS ARE APPROXIMATE UNLESS NOTED OTHERWISE TO MEET A SPECIFIC CUSTOMER NEED.



2013 FLOOR INTERIOR VIEW
 SUPER CHIEF-1

DATE: 23 OCT 12		DRAWING NO. 13SC4300-9
DWG. GLF	REV. NR	

1:23